

APPENDICES

- APPENDIX A: INFRASTRUCTURE EXHIBITS
- APPENDIX B: INFRASTRUCTURE AND PUBLIC FACILITIES
COST ASSUMPTIONS
- APPENDIX C: EXISTING AND PROPOSED FEE REVENUE
ESTIMATES
- APPENDIX D: RIO DEL ORO SPECIAL FINANCING
DISTRICT: COST ALLOCATION MODEL
- APPENDIX E: RIO DEL ORO SCHOOLS FUNDING
ANALYSIS

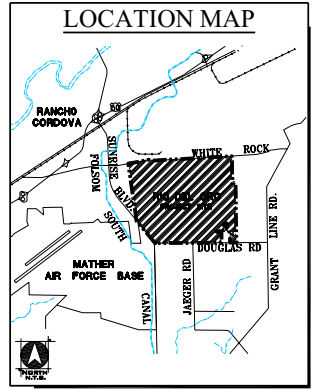
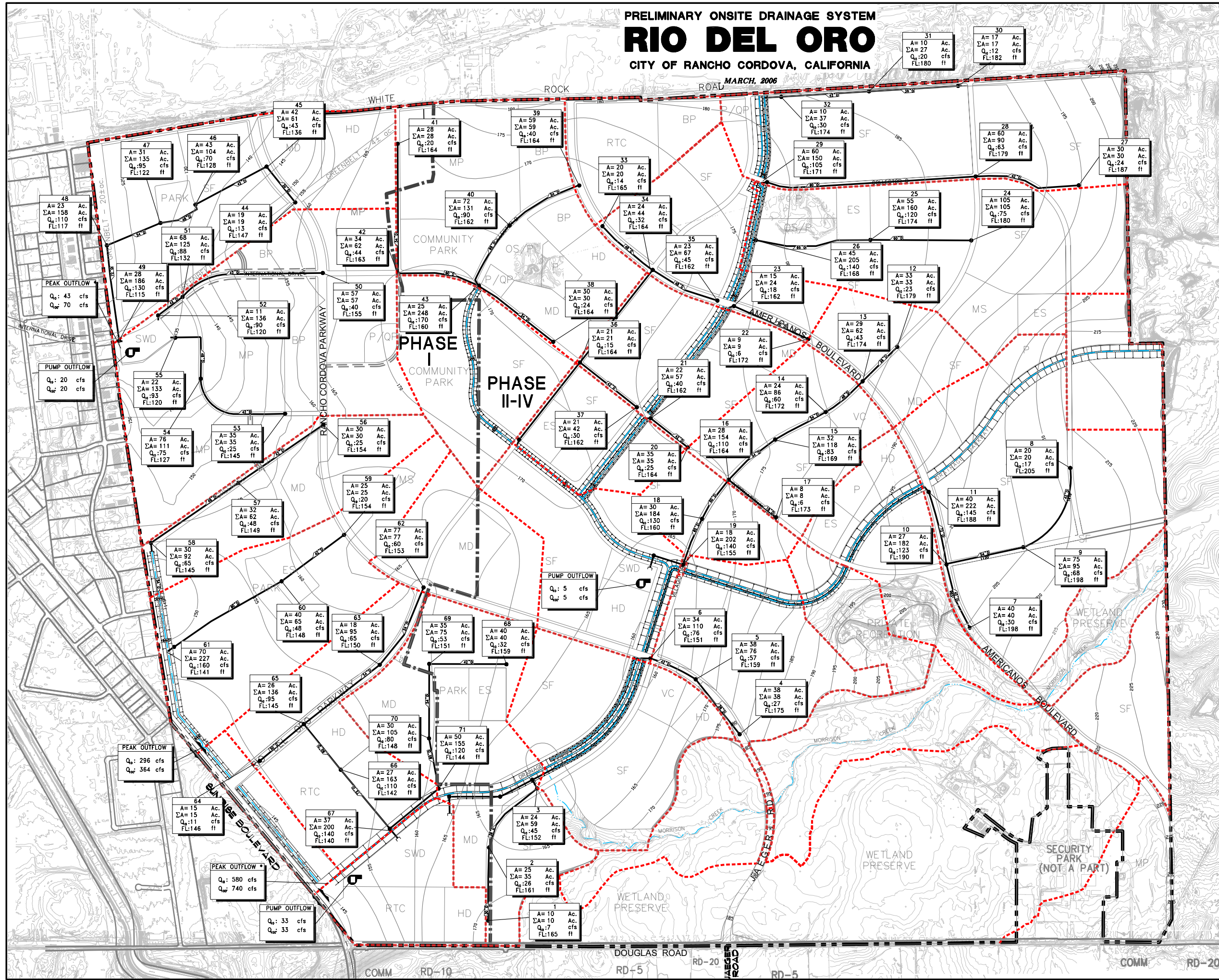
APPENDIX A

INFRASTRUCTURE EXHIBITS

Map A-1	On-Site Drainage System
Map A-2	On-Site Water Supply Facilities
Map A-3	Off-Site Water Supply Facilities, Phase 1
Map A-4	Off-Site Water Supply Facilities, Buildout
Map A-5	Conceptual On-Site Sewer Facilities
Map A-6	Conceptual Off-Site Sewer Facilities
Map A-7	Circulation Plan
Figure A-1	Rio del Oro Major Roadway Cross Sections
Map A-8	Bikeway and Trails Plan

PRELIMINARY ONSITE DRAINAGE SYSTEM RIO DEL ORO CITY OF RANCHO CORDOVA, CALIFORNIA

MARCH, 2006



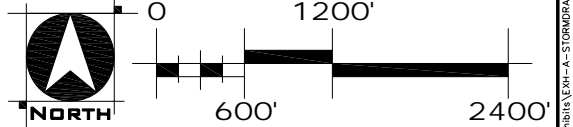
LEGEND

- PROPERTY BOUNDARY
- PROPOSED TRUNK DRAIN PIPE W/ MANHOLE
- PROPOSED ONSITE SUB-WATERSHED
- PROPOSED GROUND CONTOUR
- EXISTING GROUND CONTOUR
- PROPOSED DRAIN PIPE SIZE & DIRECTION
- PIPE LENGTH
- WATERWAYS AND DRAIN
- PHASE LINE BOUNDARY

9	NODE NUMBER
A=75 Ac.	SHED AREA
ΣA=85 Ac.	CUMULATIVE AREA
Q _p :68 cfs	10YR PEAK FLOW
FL:198 ft	PIPE INVERT

- NOTES:**
- 10 YR NODAL PEAK FLOWS APPROXIMATE
 - TRUNK LINE LOCATIONS APPROXIMATE
 - LAND USE REVISED BY G.C. WALLACE ON 01/27/06
 - "MINED" ON-SITE GRADING BY WOODRODGERS, INC. ON 04/13/05
 - PEAK OUTFLOW AT NORTHWEST BASIN DOES NOT INCLUDE UPSTREAM OFFSITE FLOW.
 - PEAK OUTFLOW AT SOUTHWEST BASIN INCLUDES UPSTREAM OFFSITE FLOW. FLOW LEAVING RIO DEL ORO BORDER IS SPLIT TO ACCOMMODATE BOTH DOWNSTREAM OVERCHUTE CAPACITIES.

Map A-1 On-Site Drainage System

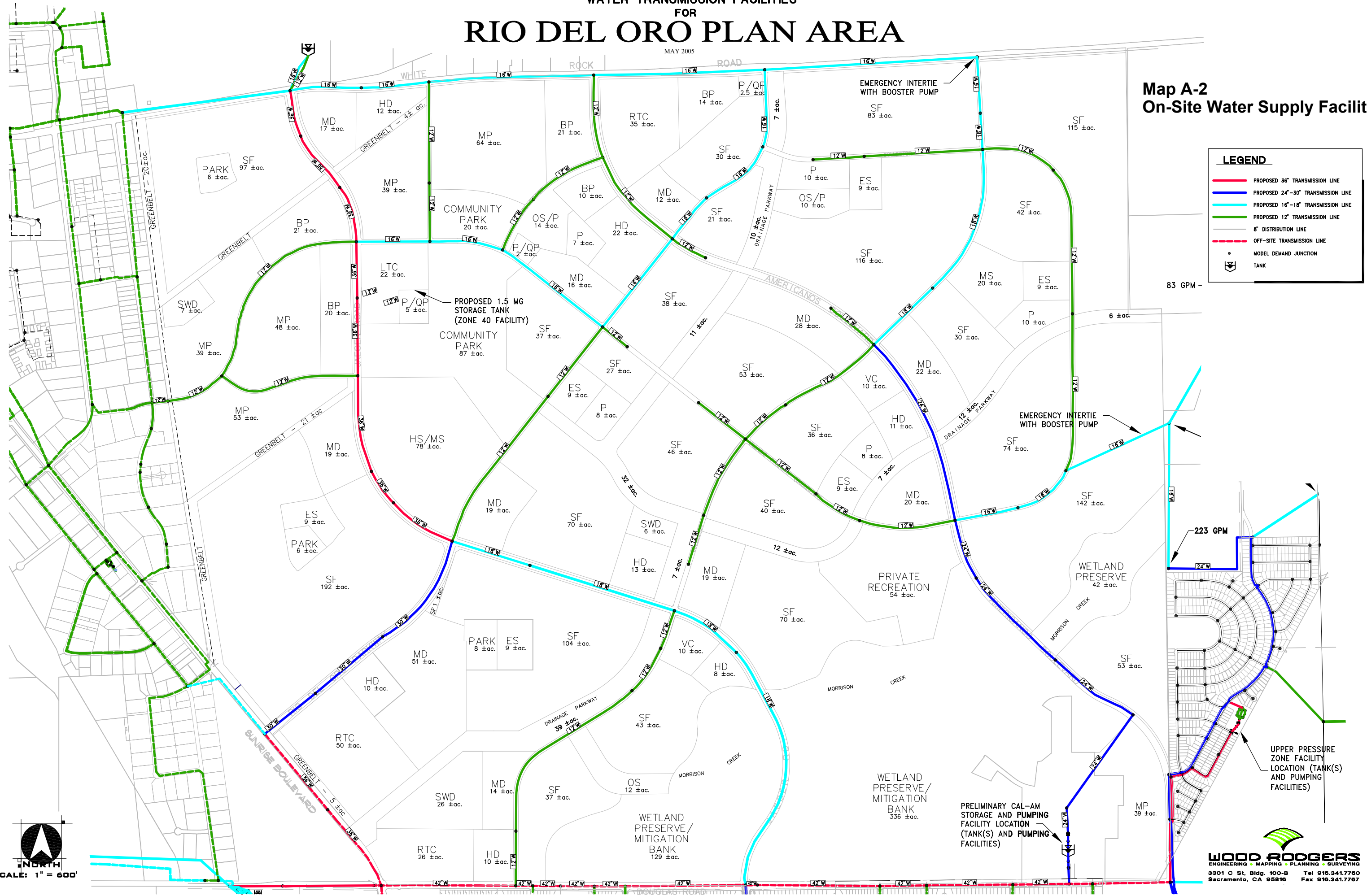


S:\Jobs\1032-RIO DEL ORO\Drawings\Exhibits\Exh-A-STORADRANL_TRUNK-SYS.dwg 3/07/06 11:09am rmmontes

WATER TRANSMISSION FACILITIES FOR RIO DEL ORO PLAN AREA

MAY 2005

Map A-2 On-Site Water Supply Facilities



LEGEND

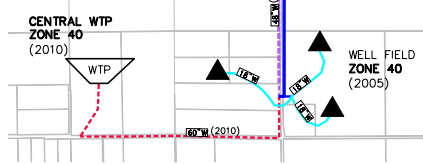
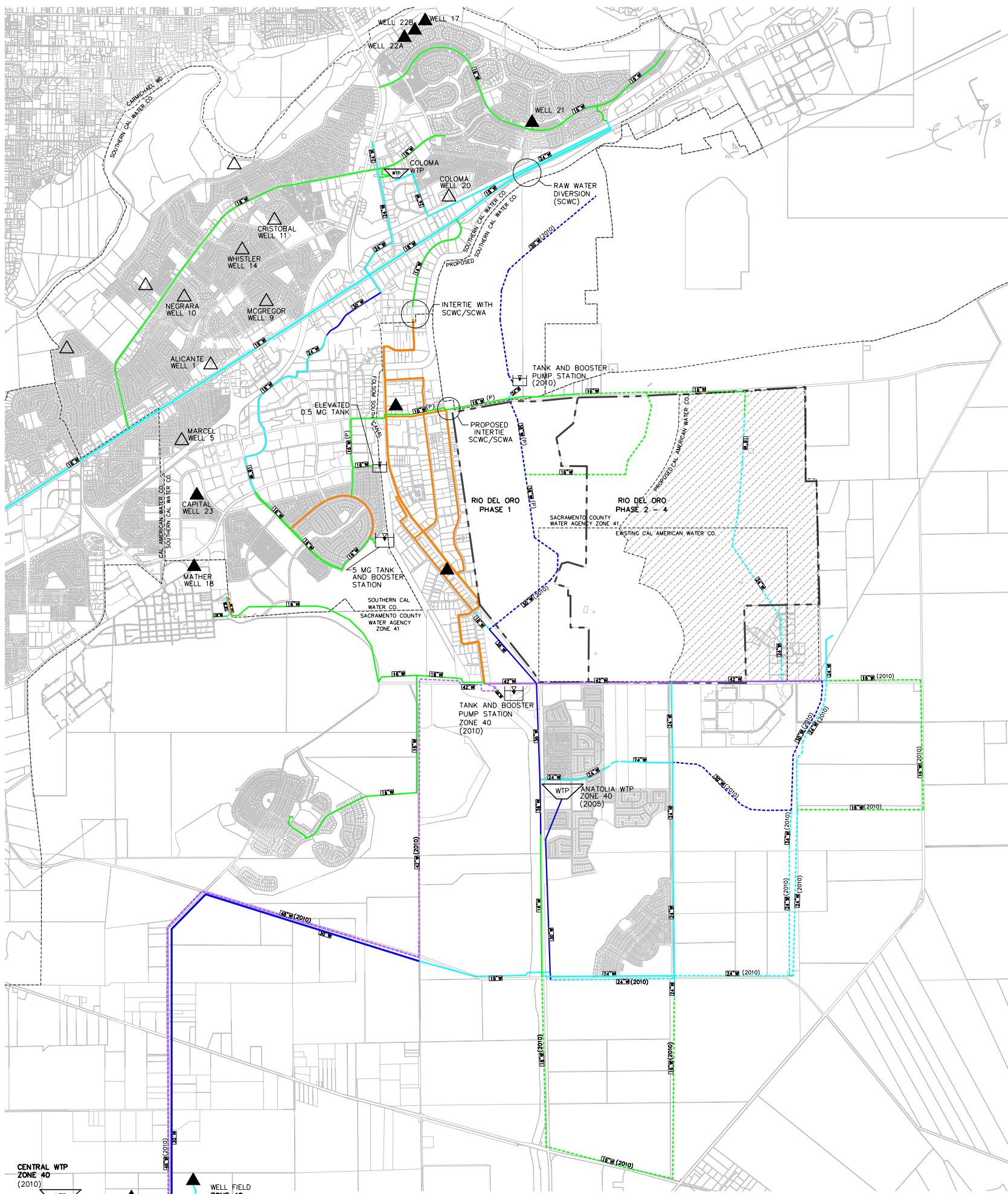
- PROPOSED 36" TRANSMISSION LINE
- PROPOSED 24"-30" TRANSMISSION LINE
- PROPOSED 16"-18" TRANSMISSION LINE
- PROPOSED 12" TRANSMISSION LINE
- 8" DISTRIBUTION LINE
- - - OFF-SITE TRANSMISSION LINE
- MODEL DEMAND JUNCTION
- ⊕ TANK

NORTH
SCALE: 1" = 600'

WOOD RODGERS
ENGINEERING • MAPPING • PLANNING • SURVEYING
3301 C St. Bldg. 100-B Sacramento, CA 95816 Tel 916.341.7780 Fax 916.341.7787

RIO DEL ORO OFF-SITE EXHIBIT PHASE 1

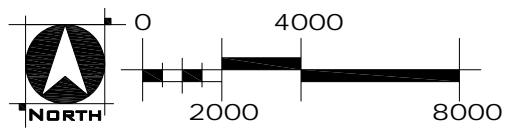
SACRAMENTO, CALIFORNIA
MAY 2005



LEGEND:

- | | | | | | |
|--|--------------------------------------|--|--------------------------------------|--|----------------------------------|
| | EXISTING DISTRIBUTION LINE | | FUTURE TRANSMISSION LINE (14" - 16") | | TANK AND/OR BOOSTER PUMP STATION |
| | EXIST. TRANSMISSION LINE (14" - 16") | | FUTURE TRANSMISSION LINE (18" - 24") | | WATER TREATMENT PLANT |
| | EXIST. TRANSMISSION LINE (18" - 24") | | FUTURE TRANSMISSION LINE (30" - 36") | | WELL |
| | EXIST. TRANSMISSION LINE (30" - 36") | | FUTURE TRANSMISSION LINE (42" - 48") | | WELL - NO LONGER IN SERVICE |
| | EXIST. TRANSMISSION LINE (42" - 48") | | FUTURE 60" TRANSMISSION LINE | | PHASE 1 BOUNDARY |
| | (P): PROPOSED PHASE 1 | | (): APPROX. DATE OF CONSTRUCTION | | |

NOTES:
1. EXISTING FACILITIES ARE IDENTIFIED AS EITHER EXISTING FACILITIES OR PLANNED FOR CONSTRUCTION IN THE NEAR TERM BY OTHER PROJECTS.



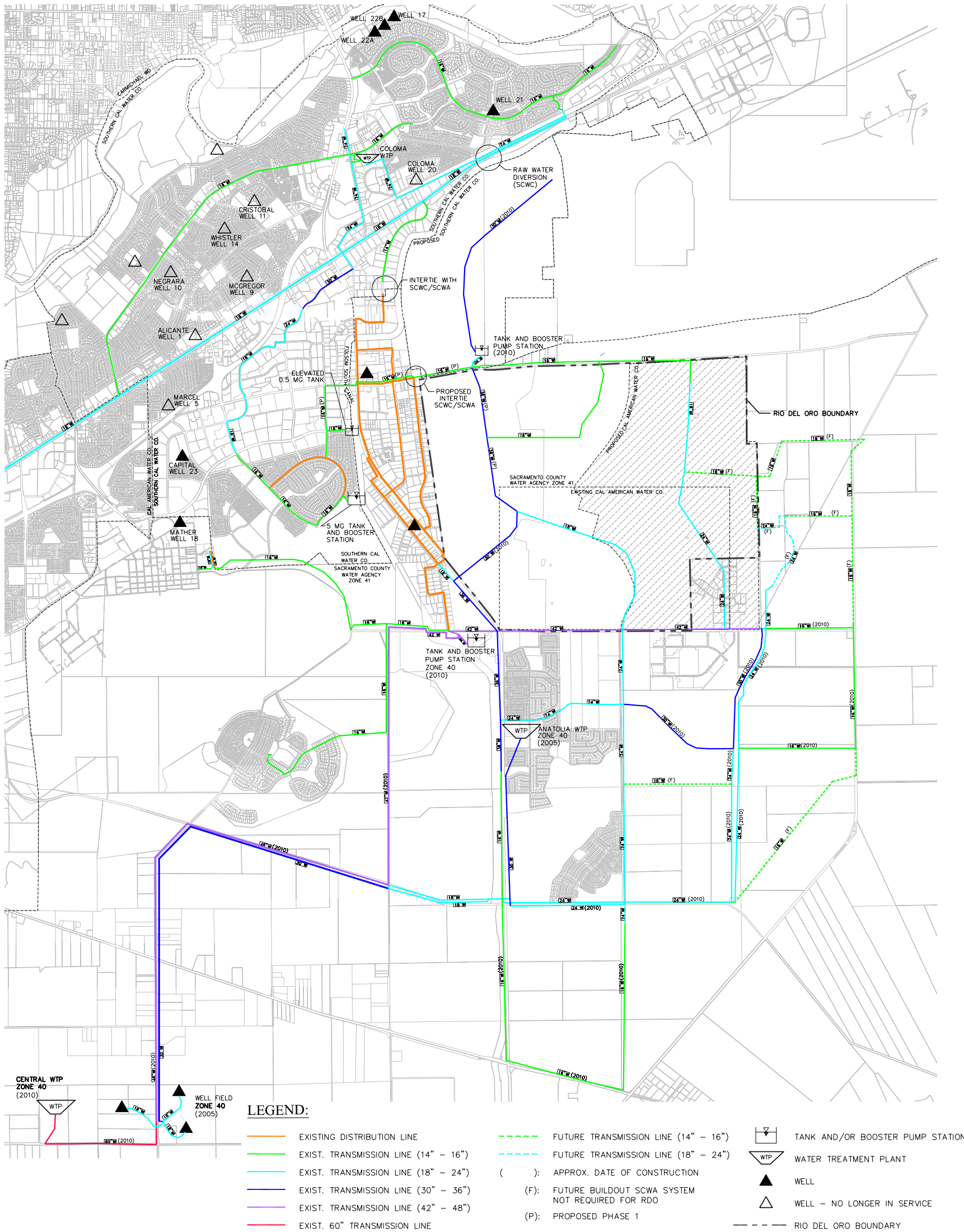
**Map A-3
Off-Site Water Supply Facilities,
Phase 1**

WOOD RODGERS
ENGINEERING • MAPPING • PLANNING • SURVEYING
3301 C St, Bldg. 100-B Tel 916.341.7760
Sacramento, CA 95816 Fax 916.341.7767

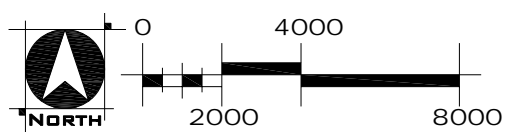
RioDelOro\WoodRods-CAD\Civil\Studies\Water\Off-site\Exhibit\RioDelOro_Exhibit.dwg 5/21/05 3:15pm jpatore

RIO DEL ORO OFF-SITE EXHIBIT FULL BUILDOUT

SACRAMENTO, CALIFORNIA
MAY 2005



- LEGEND:**
- EXISTING DISTRIBUTION LINE
 - EXIST. TRANSMISSION LINE (14" - 16")
 - EXIST. TRANSMISSION LINE (18" - 24")
 - EXIST. TRANSMISSION LINE (30" - 36")
 - EXIST. TRANSMISSION LINE (42" - 48")
 - EXIST. 60" TRANSMISSION LINE
 - - - FUTURE TRANSMISSION LINE (14" - 16")
 - - - FUTURE TRANSMISSION LINE (18" - 24")
 - () : APPROX. DATE OF CONSTRUCTION
 - (F): FUTURE BUILDOUT SCWA SYSTEM NOT REQUIRED FOR RDO
 - (P): PROPOSED PHASE 1
 - ☐ TANK AND/OR BOOSTER PUMP STATION
 - ☐ WTP WATER TREATMENT PLANT
 - ▲ WELL
 - △ WELL - NO LONGER IN SERVICE
 - - - RIO DEL ORO BOUNDARY



**Map A-4
Off-Site Water Supply Facilities,
Buildout**

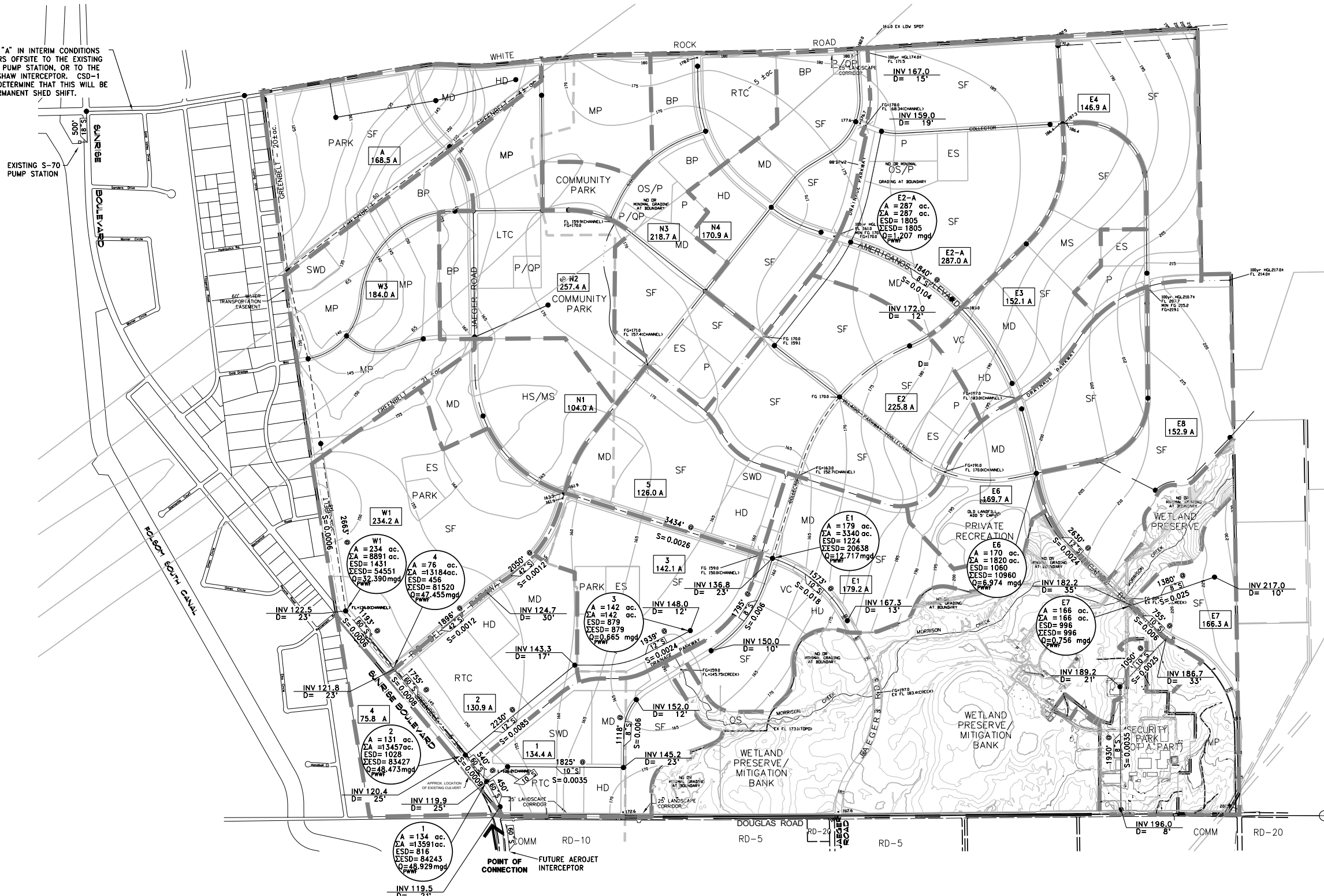
WOOD RODGERS
ENGINEERING • MAPPING • PLANNING • SURVEYING
3301 C St, Bldg. 100-B Tel 916.341.7760
Sacramento, CA 95816 Fax 916.341.7767

RioDelOroOffSiteExhibit\Water\01-Off-Site-Exhibit\RDO_Exhibit.dwg 5/21/05 3:10pm jkatorre

EXHIBIT D ON-SITE SEWER FACILITIES PLAN RIO DEL ORO SACRAMENTO COUNTY, CALIFORNIA

**Map A-5
Conceptual On-Site Sewer Facilities**

SHED "A" IN INTERIM CONDITIONS SEWERS OFFSITE TO THE EXISTING S-70 PUMP STATION, OR TO THE BRADSHAW INTERCEPTOR. CSD-1 MAY DETERMINE THAT THIS WILL BE A PERMANENT SHED SHIFT.



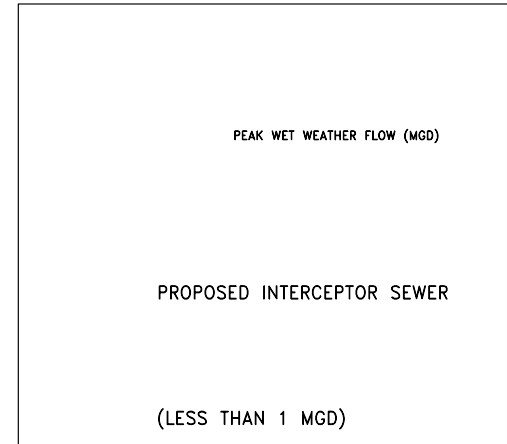
CONTOURS SHOWN ON PLAN PER PRELIMINARY PROPOSED GRADING.
INTERCEPTORS ADJACENT TO SUNRISE BLVD, JAEGER ROAD & RIO DEL ORO PARKWAY TO BE CONSTRUCTED OUTSIDE OF RIGHT OF WAY TO THE EXTENT POSSIBLE. INTERCEPTOR RESERVATION CORRIDORS AND ANY NECESSARY TEMPORARY CONSTRUCTION EASEMENTS WOULD BE IDENTIFIED ONCE DETAILED LAND USE PLANS ARE DEVELOPED, WHICH WOULD DEPICT WIDTH, LOCATION & RELATION TO ROADWAY.

SRCS HAS IDENTIFIED A NEED FOR A STAGING AREA FOR FUTURE TUNNELING OF THE LAGUNA INTERCEPTOR. THIS WOULD REQUIRE TEMPORARY USE OF A PORTION OF THE STORM WATER DETENTION FACILITY. DURING THE DESIGN OF THE BASIN, PLACEMENT OF WETLAND MITIGATION AREAS SHOULD BE COORDINATED W/ SRCS.

THE 42" & 36" INTERCEPTORS MAY BE SMALLER DUAL LINES, WITH INITIAL PIPE PLACED FOR INTERIM (ON-SITE) FLOWS & SECOND PIPE FOR ULTIMATE (OFF-SITE) FLOWS.

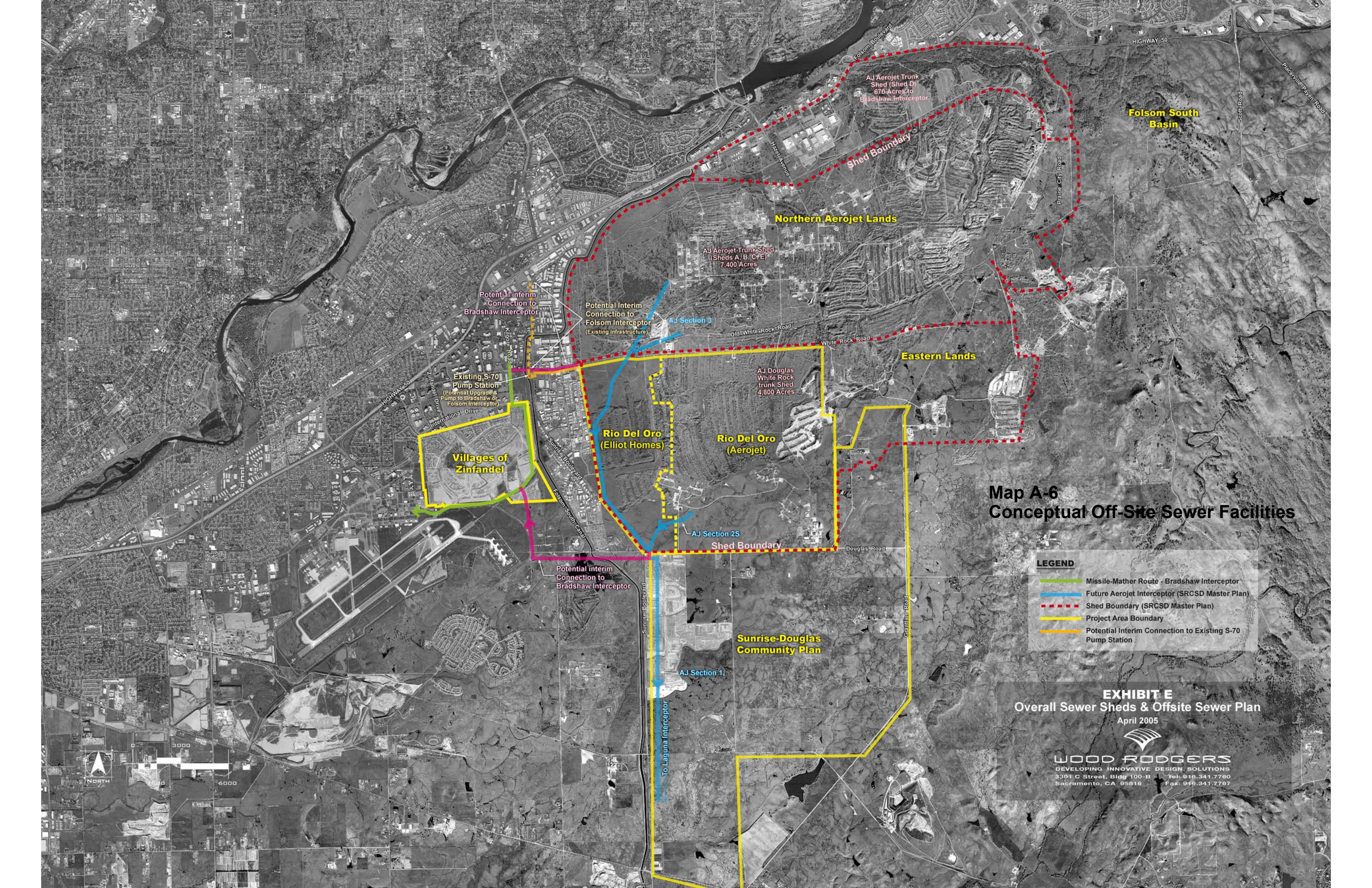
SHED "A" SEWERS OFFSITE TO THE EXISTING S-70 PUMP STATION, OR TO THE BRADSHAW INTERCEPTOR ON AN INTERIM BASIS. CSD-1 MAY DETERMINE THAT THIS WILL BE A PERMANENT SHED SHIFT.

INVERTS SHOWN ARE FOR OUTGOING PIPES. INCOMING PIPES ARE SET TO MATCH CROWNS WITH OUTGOING PIPES.



ONSITE & OFFSITE FLOW INFORMATION			
	AREA (AC)	ESD's	Q (MGD)
OFFSITE (ENTERING RDO)	10,305	62,848	37.167
ONSITE (SHED AREA A)	168	1,210	0.872
ONSITE (EXITING RDO @ NODE 1)	3,286	21,395	12.953
ONSITE / OFFSITE (EXITING RDO @ NODE 1)	13,591	84,243	48.929
WESTERN 1100± ACRES	1,115 (G)	7,167	4.540

EXHIBIT D ONSITE SEWER FACILITIES



**Map A-6
Conceptual Off-Site Sewer Facilities**

LEGEND

- Missile-Mather Route - Bradshaw Interceptor
- Future Aerojet Interceptor (SRCS Master Plan)
- Shed Boundary (SRCS Master Plan)
- Project Area Boundary
- Potential Interim Connection to Existing S-70 Pump Station

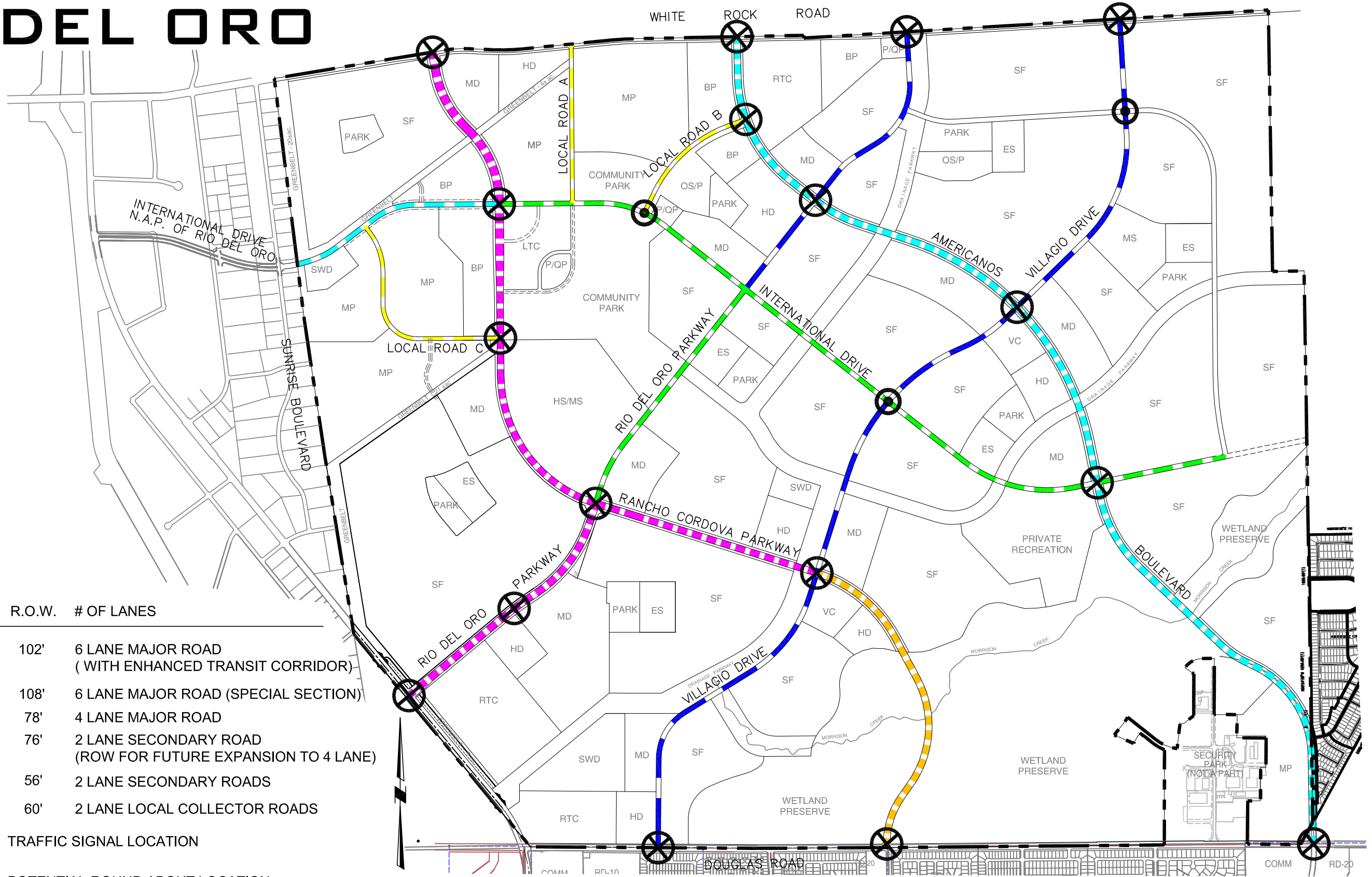
EXHIBIT E
Overall Sewer Sheds & Offsite Sewer Plan
April 2005

WOOD RODGERS
DEVELOPING INNOVATIVE DESIGN SOLUTIONS
3301 C Street, Bldg 100-B Tel: 916.341.7780
Sacramento, CA 95816 Fax: 916.341.7787



Map A-7 CIRCULATION PLAN

RIO DEL ORO



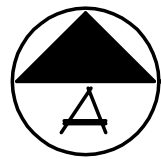
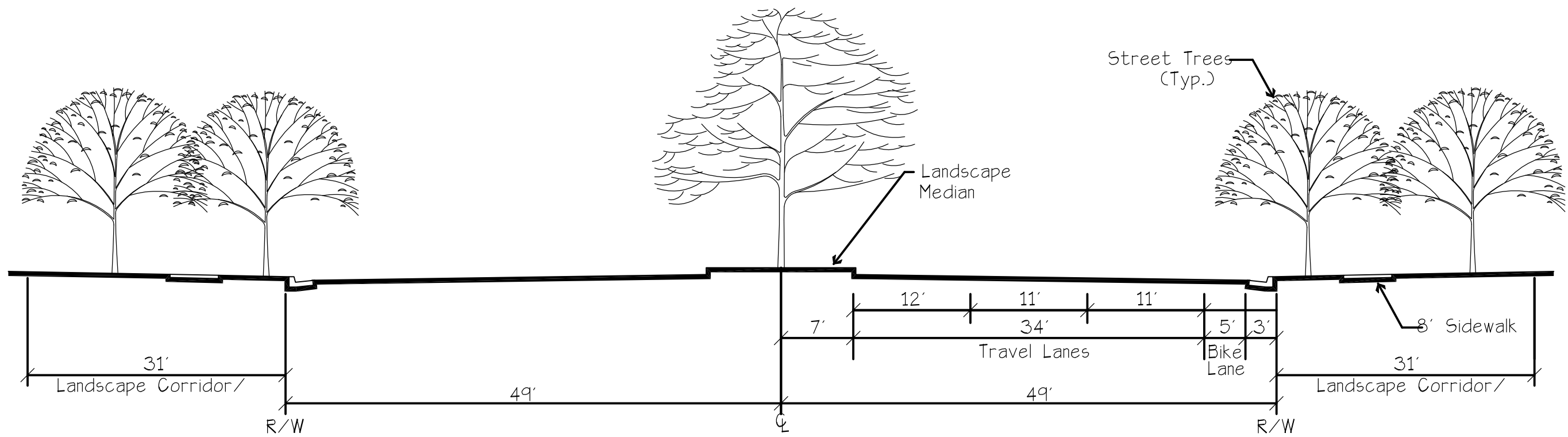
LEGEND

SYMBOL	R.O.W.	# OF LANES
	102'	6 LANE MAJOR ROAD (WITH ENHANCED TRANSIT CORRIDOR)
	108'	6 LANE MAJOR ROAD (SPECIAL SECTION)
	78'	4 LANE MAJOR ROAD
	76'	2 LANE SECONDARY ROAD (ROW FOR FUTURE EXPANSION TO 4 LANE)
	56'	2 LANE SECONDARY ROADS
	60'	2 LANE LOCAL COLLECTOR ROADS
		TRAFFIC SIGNAL LOCATION
		POTENTIAL ROUND ABOUT LOCATION

Exhibit 4-2 Circulation Plan

Rio Del Oro Specific Plan

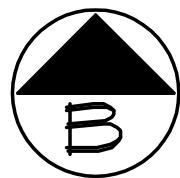
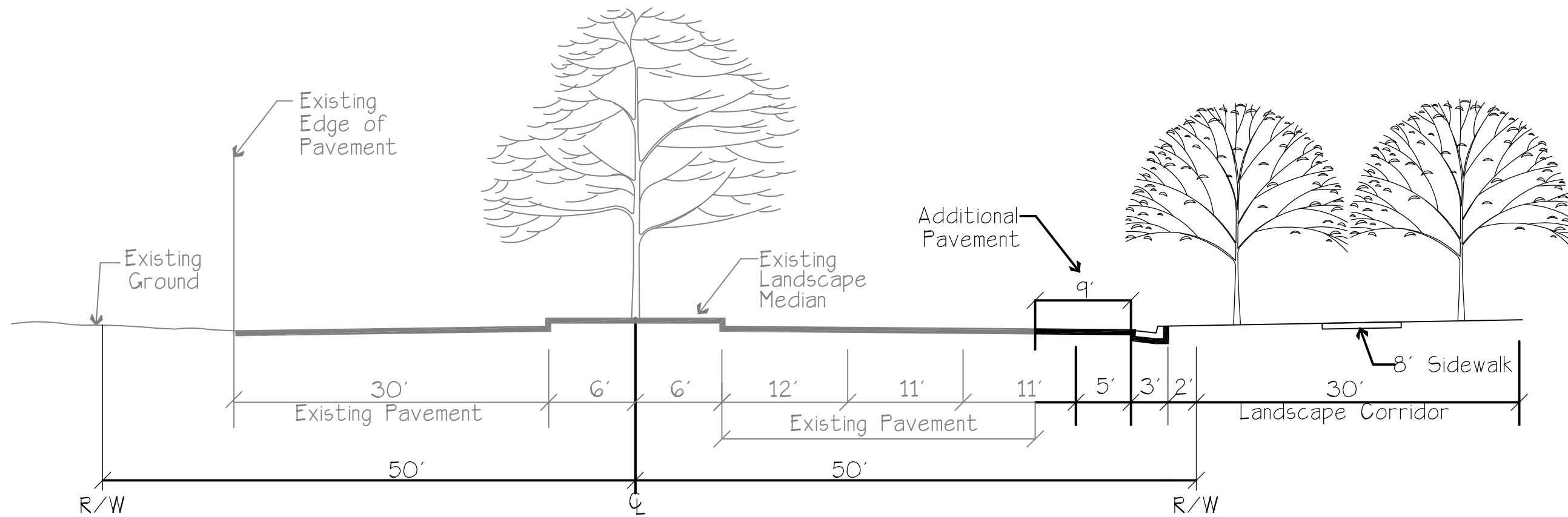
Figure A-1
Major Roadway Cross Section



WHITE ROCK ROAD - 6 LANES

98' STREET SECTION
 NOT TO SCALE

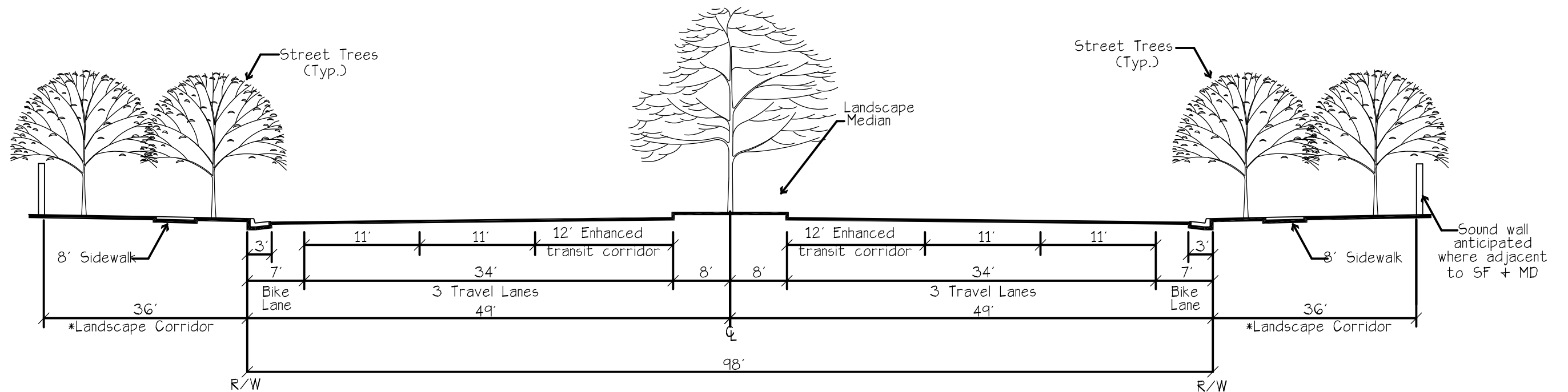
Figure A-1
Major Roadway Cross Section



SUNRISE BLVD. - 6 LANES

100' STREET SECTION
 NOT TO SCALE

**Figure A-1
Major Roadway Cross Section**



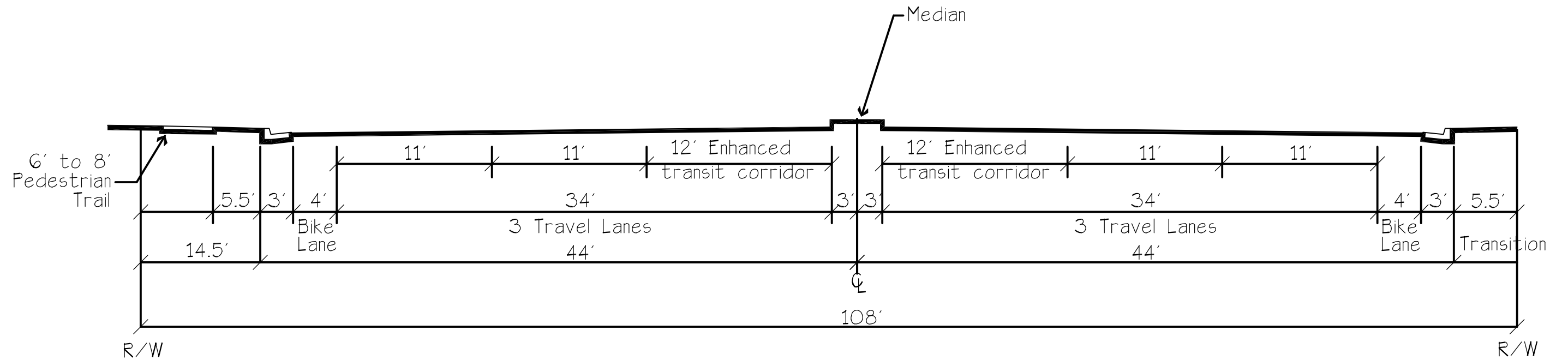
RANCHO CORDOVA PARKWAY & RIO DEL ORO PARKWAY (WEST OF RANCHO CORDOVA PARKWAY) 6 LANE SECTION WITH TRANSIT (98')



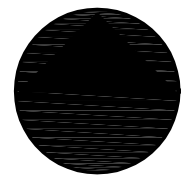
NOT TO SCALE

*ADJACENT TO LAND USES OTHER THAN SF/MD WILL VARY & MAY BE A LANDSCAPE EASEMENT

**Figure A-1
Major Roadway Cross Section**

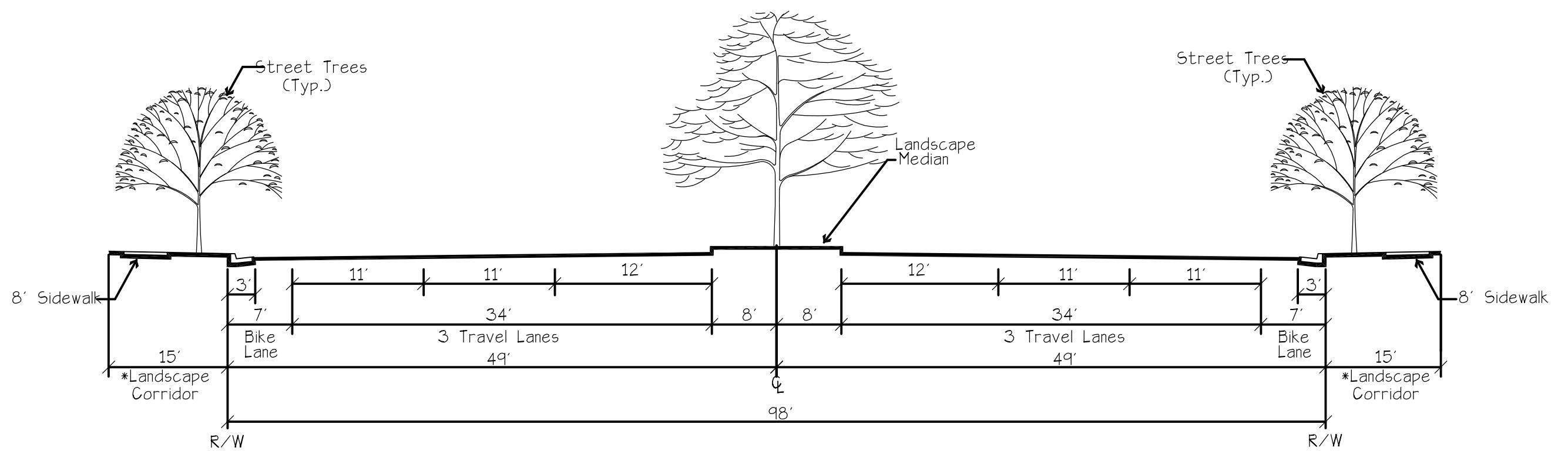


**RANCHO CORDOVA PARKWAY
(WITHIN THE WETLAND PRESERVE) - 6 LANES (108')**

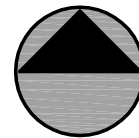


NOT TO SCALE

**Figure A-1
Major Roadway Cross Section**



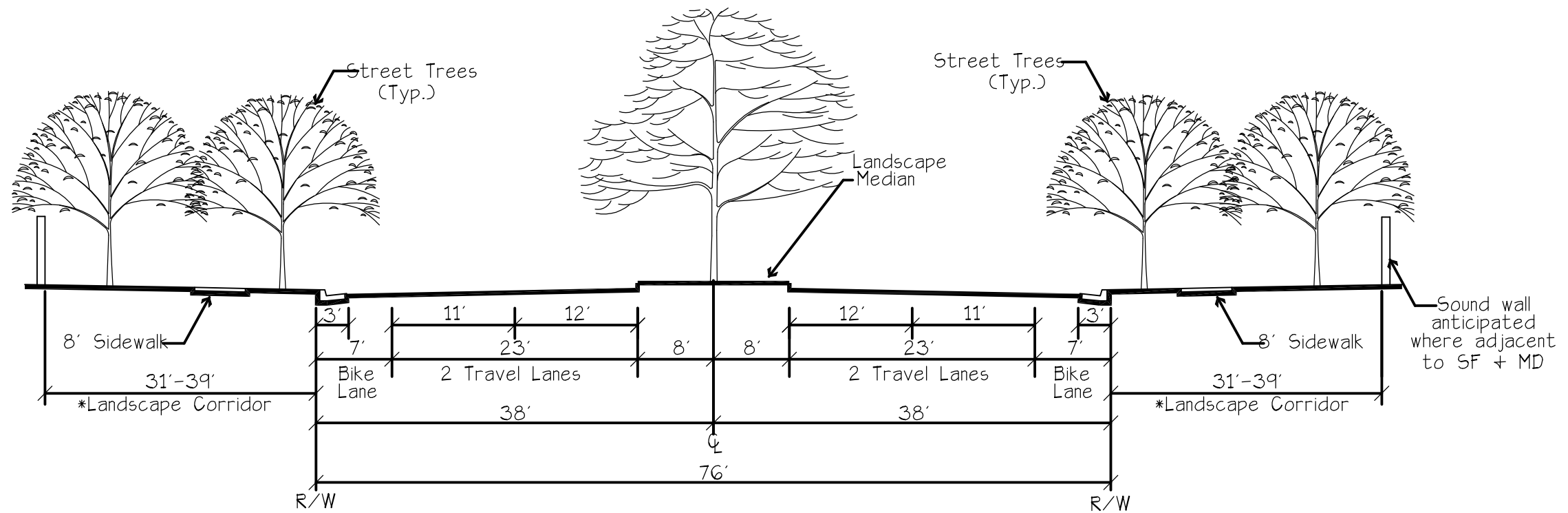
**INTERNATIONAL DRIVE WEST OF RANCHO CORDOVA PARKWAY
6 LANE SECTION (98')**



NOT TO SCALE

*ADJACENT TO LAND USES OTHER THAN SF/MD WILL VARY & MAY BE A LANDSCAPE EASEMENT

**Figure A-1
Major Roadway Cross Section**

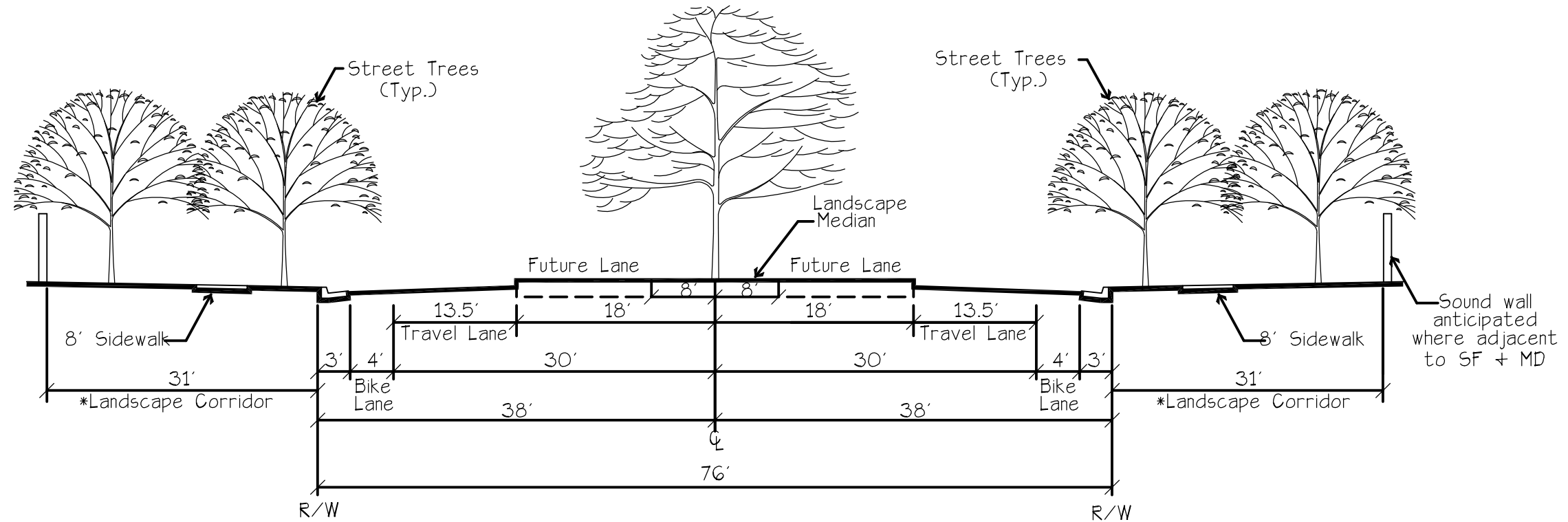


**AMERICANOS BLVD & PORTION OF
INTERNATIONAL DRIVE (BETWEEN RANCHO
CORDOVA PARKWAY AND ROAD B)
& PORTION OF RIO DEL ORO PARKWAY NORTH OF
RANCHO CORDOVA PARKWAY - 4 LANES (76')**

NOT TO SCALE

*ADJACENT TO LAND USES OTHER THAN SF/MD WILL VARY & MAY BE A LANDSCAPE EASEMENT

**Figure A-1
Major Roadway Cross Section**



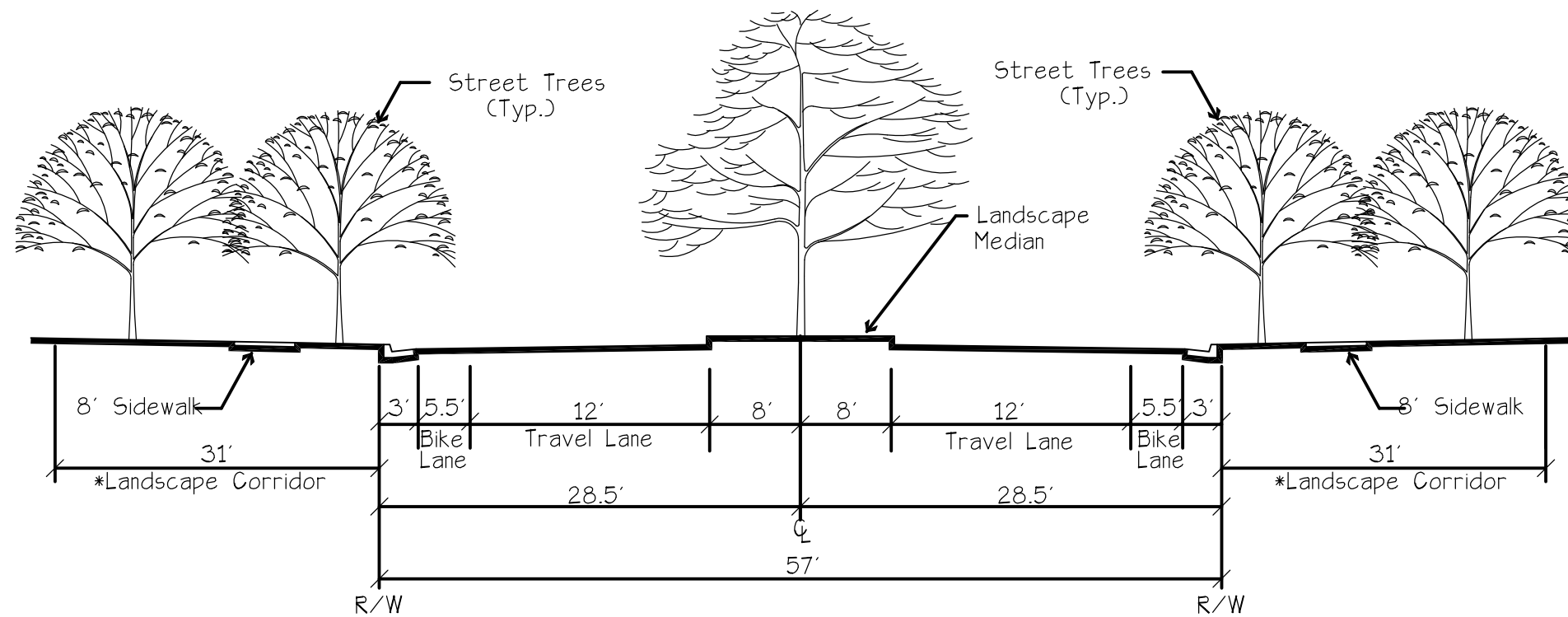
**INTERNATIONAL DRIVE (EAST OF
ROAD B) & RIO DEL ORO PARKWAY (NORTH
OF THE DRAINAGE PARKWAY) - 2/ 4 LANES (76')**



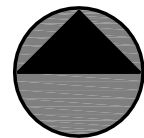
NOT TO SCALE

*ADJACENT TO LAND USES OTHER THAN SF/MD WILL VARY & MAY BE A LANDSCAPE EASEMENT

**Figure A-1
Major Roadway Cross Section**



**VILLAGIO DRIVE
2 LANE LIMITED ACCESS ARTERIAL (57')**



NOT TO SCALE

*ADJACENT TO LAND USES OTHER THAN SF/MD WILL VARY & MAY BE A LANDSCAPE EASEMENT

Map A-8 BIKEWAY AND TRAILS PLAN

RIO DEL ORO

LEGEND

- WEST TRAIL
 - NORTH TRAIL
 - MORRISON CREEK TRAIL
 - LOOP TRAIL
 - VILLAGE TRAIL
 - CULVERT STREET CROSSING
 - AT GRADE STREET CROSSING X
- CLASS I 10' OFF-STREET TRAIL
- CLASS II TRAIL

