
2.0 PROJECT DESCRIPTION

2.1 PROJECT BACKGROUND

International Drive is an east/west roadway that terminates at Kilgore Road. Currently, vehicles traveling on International Drive must take Kilgore Road north to White Rock Road in order to access Sunrise Boulevard.

The City of Rancho Cordova adopted its first General Plan in June 2006. The General Plan included a Circulation Plan that identified planned transportation resources within the City, including major roadways, bikeways and trails, and transit opportunities such as light rail and busses. The extension of International Drive is included in the Circulation Plan, and includes widening portions of the existing International Drive to include six lanes of traffic in order to establish an east/west roadway through Rancho Cordova to provide traffic Relief to Highway 50. Extending International Drive across the Folsom South Canal is the first step toward reaching the goals of the Circulation Plan.

2.2 PROJECT LOCATION

International Drive lies in the City of Rancho Cordova in Sacramento County. The roadway runs in an east/west direction perpendicular to Kilgore Road, where it terminates. A figure of the project area is shown as **Figure 2-1**.

2.3 PROJECT PURPOSE AND OBJECTIVES

The purpose of the International Drive Extension Project is to accommodate increased traffic in the City of Rancho Cordova that is due to proposed and approved development projects. As identified in the Circulation Element of the City of Rancho Cordova General Plan, the project is needed to provide an additional key east-west route through the City, which would relieve pressure on Folsom Boulevard, Highway 50, and White Rock Road, all of which currently serve traffic moving through the northern portions of the City of Rancho Cordova in a east-west direction.

2.4 PROJECT DESCRIPTION

The City of Rancho Cordova proposes to extend International Drive eastward from its existing terminus at Kilgore Road by approximately 1,500 linear feet to the Sunrise Boulevard/Monier Circle (north) intersection. The extended International Drive is planned as a six-lane roadway and would include the construction of an approximately 112 linear foot six-lane bridge with left and right turn pockets over the Folsom South Canal, which runs parallel to the west side of Sunrise Boulevard in the eastern portion of the project area.

The existing four-lane International Drive would be re-striped to include six (6) through-lanes from Prospect Park Drive to the intersection of Kilgore Road, approximately 1,300 linear feet, and minor widening would take place at the intersection with Kilgore Road to accommodate turn pockets. Monier Circle would continue as a two-lane road, but would be widened at the intersection approaches, as needed, to align with International Drive. The existing median on Sunrise Blvd at the Monier Circle (south) intersection would be reconfigured to eliminate left turns onto Sunrise Blvd.

The project would improve the existing Kilgore/International intersection to a 6x6x4x4 intersection with pedestrian refuges and traffic signal, while the International/Sunrise/Monier Drive (north) intersection would be improved to a 6x6x6x2 intersection with pedestrian refuges

2.0 PROJECT DESCRIPTION

and traffic signal. A figure of the project location is shown as **Figure 2-2**. Construction on Sunrise Boulevard would include approximately 5,200 linear feet of re-striping to six lanes (from Fitzgerald Drive to White Rock Road) necessary for intersection accommodation. West of Sunrise Boulevard, along the Folsom South Canal frontage, the project would widen the pavement and install curb, gutter and sidewalk, approximately 2,600 linear feet, extending 1,100 south and 1,500 north of International Drive. South of International Drive, a soundwall for an adjacent residential subdivision could be modified to provide noise attenuation. Furthermore, a parking lot on the north side of International Drive would be modified to accommodate project construction. Finally, “noise reducing” pavement would be used along the segment of new International Drive roadway to further reduce noise adjacent to the project area beyond what would be provided by the installation of a soundwall as required mitigation.

Modifications to the Folsom South Canal maintenance road and bike path will be part of this project. The Bureau of Reclamation maintenance road for the Folsom South Canal would be modified to go under International Drive or connect at-grade to Sunrise Boulevard (not yet determined), and the Folsom South Canal bicycle path would be modified to connect to International Drive and also go under the bridge. Additionally, the existing approach roadway, utilities, curbs, landscaping, street lighting, drainage systems, and traffic striping would be modified as necessary to accommodate the extended roadway and new bridge. The project is located entirely within the City of Rancho Cordova.

2.5 PROJECT CONSTRUCTION

Project construction is anticipated to begin in late 2008 or early 2009.

2.6 REQUIRED PROJECT APPROVALS/ACTIONS

In order for the project to be implemented, a series of actions and approvals would be required from various public agencies. Anticipated project approvals/actions would include, but are not limited to, the following:

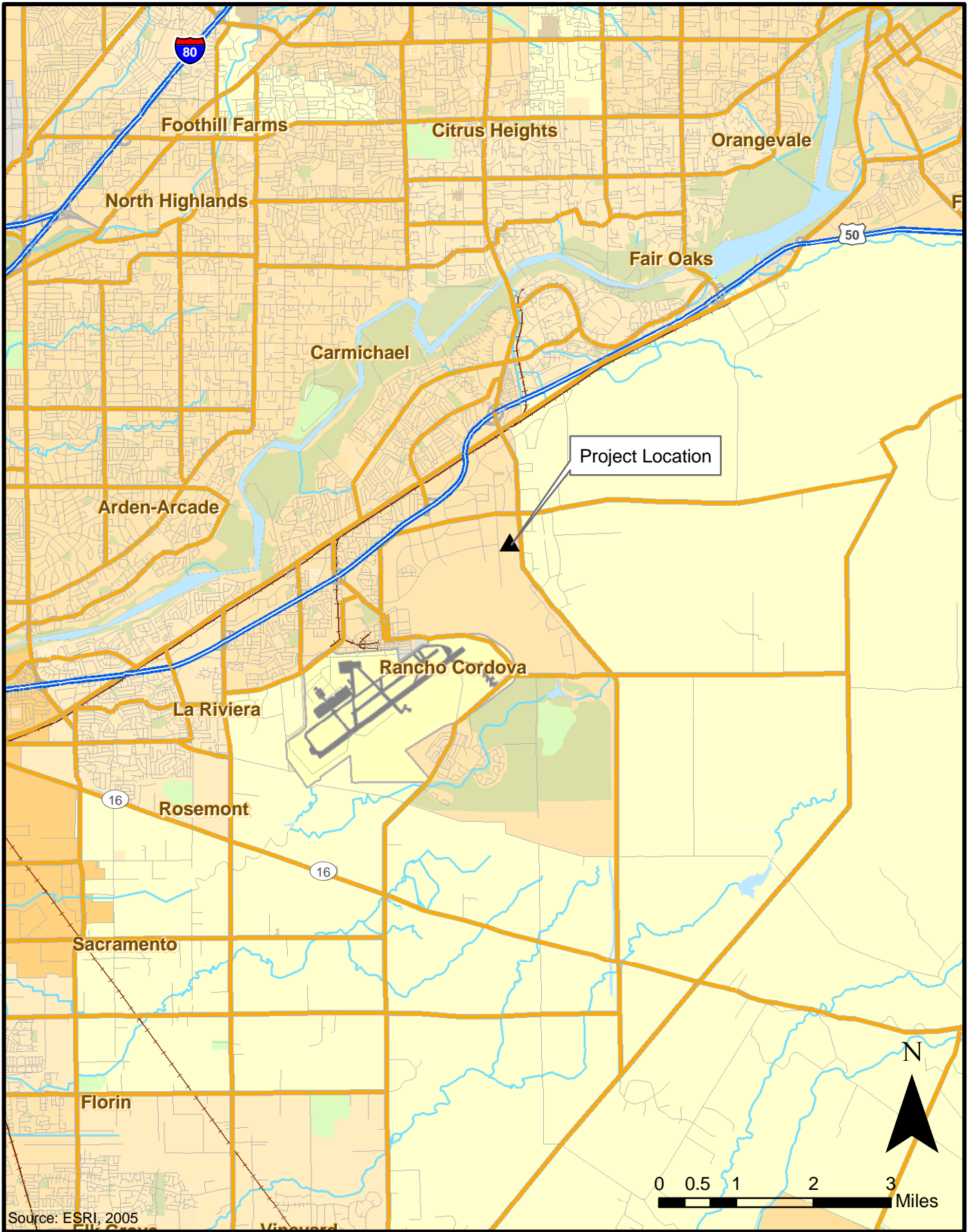
Rancho Cordova City Council - Adoption of the Mitigated Negative Declaration and Mitigation Monitoring and Reporting Program and other actions associated with project approval.

Federal Bureau of Reclamation - Approval of the Environmental Assessment, issuance of a Finding of No Significant Impact (FONSI) pursuant to the requirements of NEPA, and issuance of an Encroachment Permit to allow for construction of a bridge over the Folsom South Canal.

California Department of Transportation – Issuance of a Categorical Exemption pursuant to the requirements of NEPA.

2.7 OTHER PROJECT ASSUMPTIONS

The document assumes compliance with all applicable state, federal, and local codes and regulations including, but not limited to, City of Rancho Cordova Improvement Standards, the State Health and Safety Code, and the State Public Resources Code.



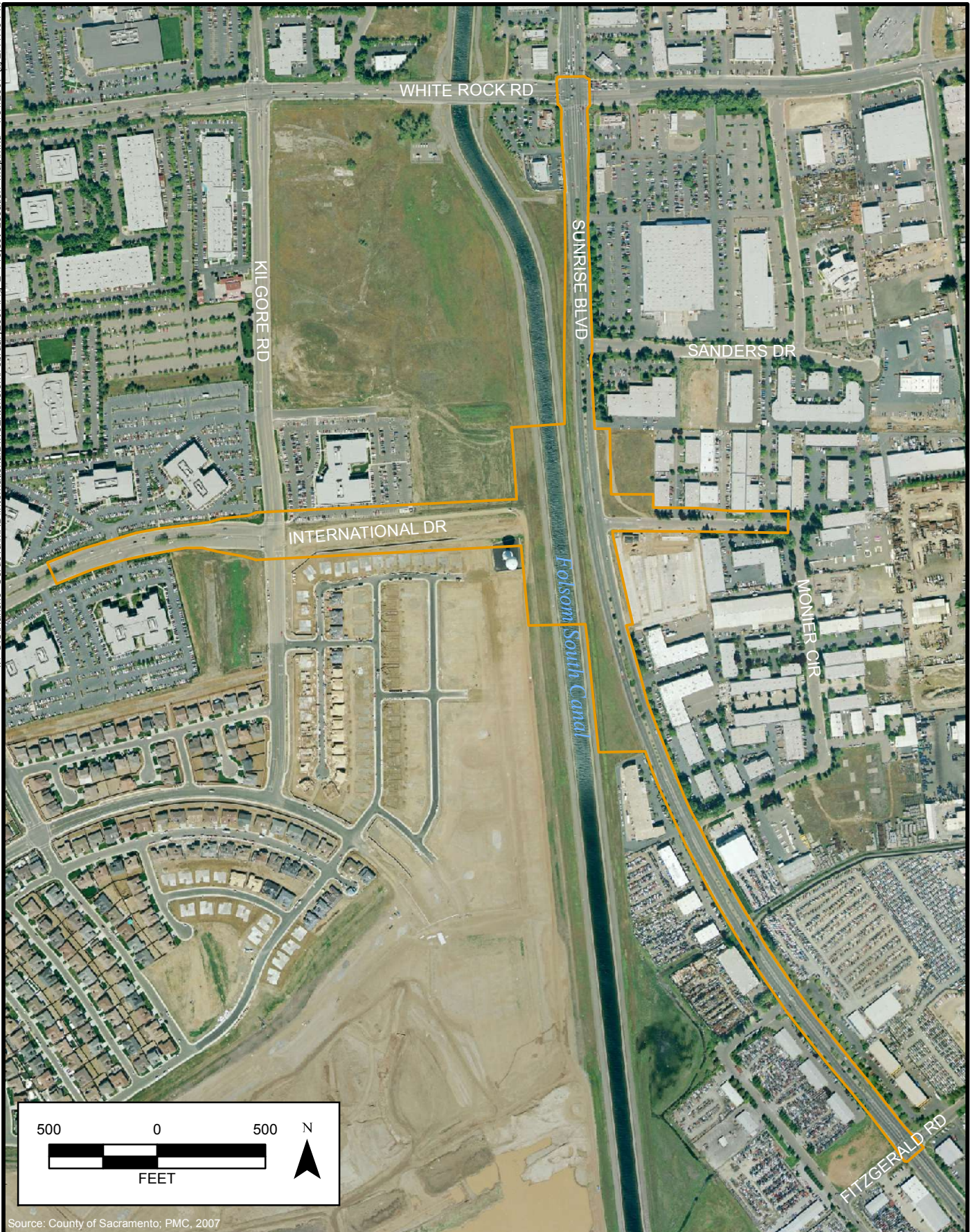
T:\GIS\Rancho_Cordova\MD\InternationalDriveExtension\Fig2-1_regional_vicinity.mxd

Source: ESRI, 2005



City of Rancho Cordova
Planning Department

Figure 2-1
Regional Vicinity Map



Source: County of Sacramento; PMC, 2007



City of Rancho Cordova
Planning Department

Figure 2
Project Location Map

2.8 TECHNICAL STUDIES

Five technical studies have been conducted as part of this IS/MND/EA. These include:

- A Cultural Resources Technical Memorandum, completed by the City of Rancho Cordova;
- A Biological Resources Evaluation (Minimal Impacts Natural Environment Study), completed by the City of Rancho Cordova;
- A Hazardous Materials Investigation (Phase 1 Initial Site Assessment), completed by Kleinfelder;
- A Construction Air Quality Impacts Analysis, completed by the City of Rancho Cordova;
- A Noise Impact Assessment, completed by Ambient Air Quality & Noise Consulting.

These technical studies are available for viewing during normal business hours (Monday through Friday, 8:00 a.m. to 5:00 p.m., except holidays) at the City of Rancho Cordova City Hall, located at 2729 Prospect Park Drive, Rancho Cordova, CA.

