

NORTH DOUGLAS

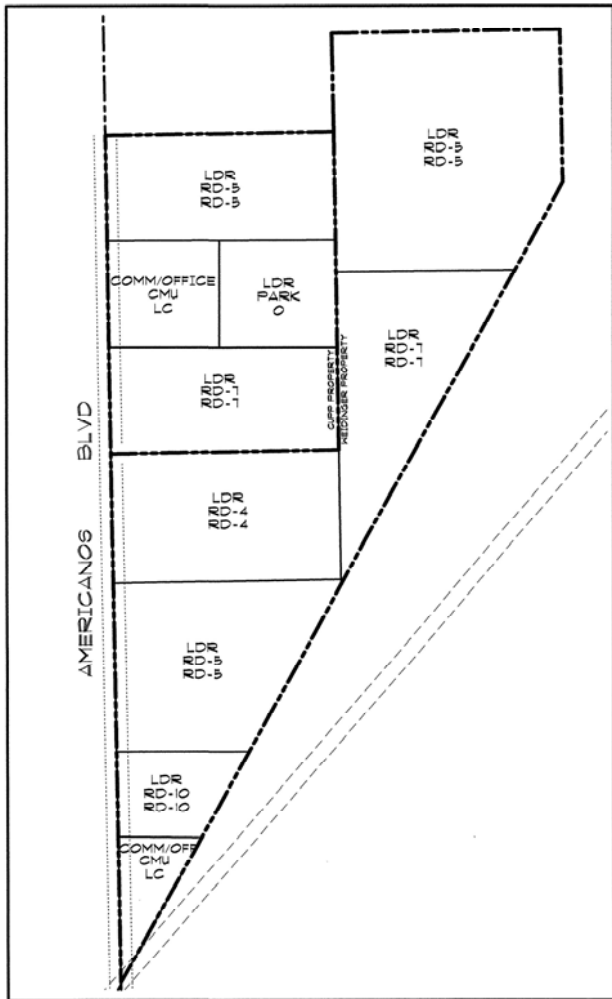
CITY OF RANCHO CORDOVA, CALIFORNIA
DECEMBER 12, 2003

KEY

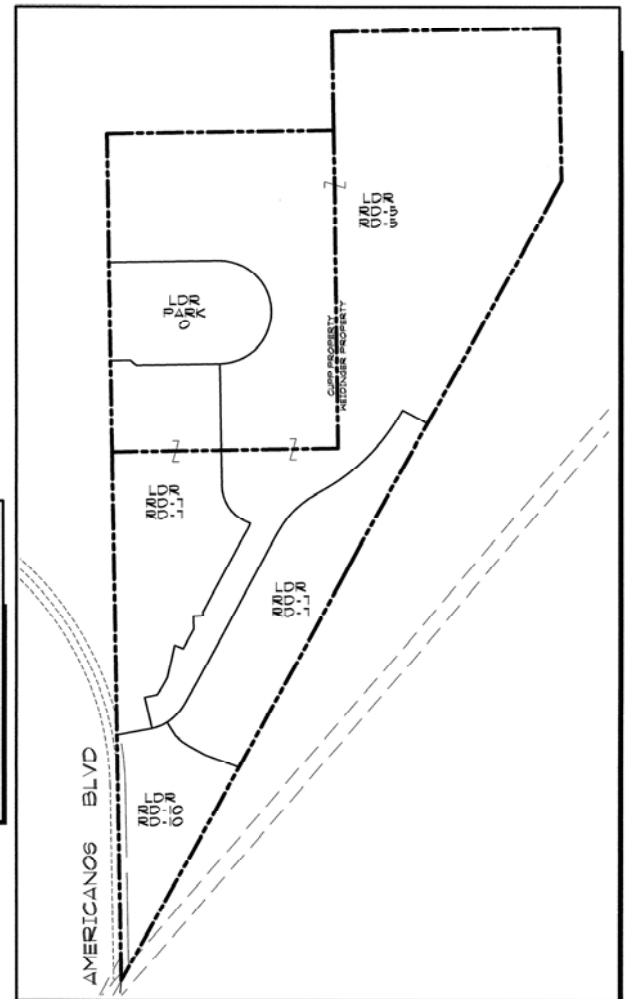
GENERAL PLAN
SPECIFIC PLAN
ZONING

SPECIFIC PLAN/PROPOSED PROJECT COMPARISON TABLE

EXISTING SPECIFIC PLAN		PROPOSED PROJECT	
LAND USE	GROSS ACRES	LAND USE	GROSS ACRES
RD-4	16.8	RD-4	0.0
RD-5	61.0	RD-5	77.3
RD-7	29.8	RD-7	34.6
RD-10	5.3	RD-10	7.9
PARK	7.1	PARK	9.0
CMU	4.9	CMU	0.0
		OPEN SPACE	0.3
		AMERICANOS BLVD.	1.1
SUBTOTAL	129.9		130.2



Existing Specific Plan



Proposed Project

Source: Wood Rodgers, 2003



FIGURE 3
EXISTING AND PROPOSED LAND USES