





RANCHO CORDOVA LITTLE LEAGUE

City of Rancho Cordova
Community Meeting #1

02.24.21

1



Meeting Outline & Goals

- Introductions
- Project schedule overview
- Project design overview
- Gather Community feedback
- Next steps

2

Introductions

Meeting Presenters:



Albert Stricker
City of Rancho Cordova
Public Works Director



John Courtney
LPA, Inc.
Senior Project Manager



Kristine Courdy
City of Rancho Cordova
Project Manager



LPA

Project Stakeholders:



3

Preliminary Schedule Overview



LPA

2021 - Spring

Conceptual Design Community Meetings

2021 - Summer/Fall

Engineering Design Plans

2022 - Spring

Bidding & Award

2022 - Summer

Start Construction of Phase One (subject to funding)

4



Existing Conditions

5

Existing Conditions



6

Existing Conditions - Photos



7



Scope of Renovation Work

8

Limit of Renovation Work



9



Conceptual Design

10

Scope of Work

- ① Existing Parking to Remain
- ② New Restroom/Storage/Concession Bldg. & Flagpole Plaza
- ③ New Accent Paving (Texture/Color)
- ④ Existing Batting Cages Relocated
- ⑤ Relocate (3) storage containers to Southeast corner of school site
- ⑥ New Gate/Entry Sign
- ⑦ New Broom Finish Concrete Walk
- ⑧ Existing Classroom Buildings to Remain
- ⑨ Tubular Steel Fence at Property Line
- ⑩ Sports Netting
- ⑪ Intersection Improvements
- ⑫ City Street Rehabilitation Project (Separate City Project, Schedule Pending)

<ul style="list-style-type: none"> Ⓐ RENOVATE "MAJOR" FIELD 200' OUTFIELD Ⓑ RENOVATE "FARM" FIELD 125' OUTFIELD Ⓒ RENOVATE "TEE BALL" FIELD 90' OUTFIELD 	<ul style="list-style-type: none"> Ⓓ RENOVATE "MINOR" FIELD 200' OUTFIELD Ⓔ RENOVATE "FARM" FIELD 150' OUTFIELD W/ PRACTICE TBALL OVERLAY
---	---

*Conceptual design only, subject to change

11

Potential Phases of Implementation

- ① Existing Parking to Remain
- ② New Restroom/Storage/Concession Bldg. & Flagpole Plaza
- ③ New Accent Paving (Texture/Color)
- ④ Existing Batting Cages Relocated
- ⑤ Relocate (3) storage containers to Southeast corner of school site
- ⑥ New Gate/Entry Sign
- ⑦ New Broom Finish Concrete Walk
- ⑧ Existing Classroom Buildings to Remain
- ⑨ Tubular Steel Fence at Property Line
- ⑩ Sports Netting
- ⑪ Intersection Improvements
- ⑫ City Street Rehabilitation Project (Separate City Project, Schedule Pending)

<ul style="list-style-type: none"> Ⓐ RENOVATE "MAJOR" FIELD 200' OUTFIELD Ⓑ RENOVATE "FARM" FIELD 125' OUTFIELD Ⓒ RENOVATE "TEE BALL" FIELD 90' OUTFIELD 	<ul style="list-style-type: none"> Ⓓ RENOVATE "MINOR" FIELD 200' OUTFIELD Ⓔ RENOVATE "FARM" FIELD 150' OUTFIELD W/ PRACTICE TBALL OVERLAY
---	---

*Final phasing plan will be developed based on funding, site constraints, utility relocations, property ownership and agency approvals (such as Division of State Architect)

12

Potential Phases of Implementation



- ① Existing Parking to Remain
- ② New Restroom/Storage/Concession Bldg. & Flagpole Plaza
- ③ New Accent Paving (Texture/Color)
- ④ Existing Batting Cages Relocated
- ⑤ Relocate (3) storage containers to Southeast corner of school site
- ⑥ New Gate/Entry Sign
- ⑦ New Broom Finish Concrete Walk
- ⑧ Existing Classroom Buildings to Remain
- ⑨ Tubular Steel Fence at Property Line
- ⑩ Sports Netting
- ⑪ Intersection Improvements
- ⑫ City Street Rehabilitation Project (Separate City Project, Schedule Pending)

- ⬡ A RENOVATE "MAJOR" FIELD
200' OUTFIELD
- ⬡ B RENOVATE "FARM" FIELD
125' OUTFIELD
- ⬡ C RENOVATE "TEE BALL" FIELD
90' OUTFIELD

- ⬡ D RENOVATE "MINOR" FIELD
200' OUTFIELD
- ⬡ E RENOVATE "FARM" FIELD
150' OUTFIELD W/ PRACTICE TBALL OVERLAY

*Final phasing plan will be developed based on funding, site constraints, utility relocations, property ownership and agency approvals (such as Division of State Architect)

13

Example Materials Backstops



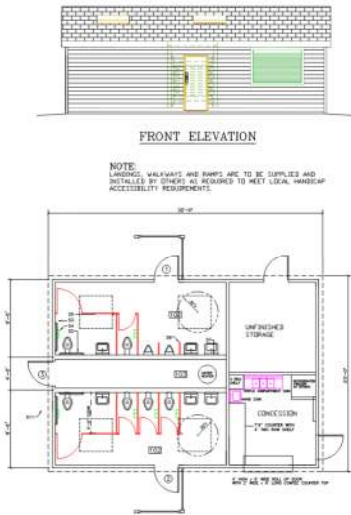
Major/Minor Fields - 30' Non-Hooded



Farm & T-ball - 20' hooded

14

Example Materials Modular Restroom, Concessions & Storage Building



Division of State Architect PreChecked Modular Building, Concrete Masonry Unit

15

Example Materials New Bleachers



5 - Row



3 - Row

16

Example Materials Bleacher Shade Structures



USA Shade



Beacon Athletic

17

Example Materials Dugouts & Furnishings



CLF w/ Vinyl Top



Scorer's Table

18

Example Materials Outfield Fencing & Foul Poles



Galvanized Vinyl Coated Chain Link Fencing & Steel Foul Pole

19

Example Materials Ornamental Plaza Fencing



Black Powdercoated Tubular Steel Fencing

20

Example Materials Monument Entry Sign



Similar to Mills Softball Complex

21

Example Materials Intersection Improvements at Zinfandel Drive & Cordova Lane



Similar to Benita Drive at Sonata Drive

22

Community Feedback



How to Participate:

- Individuals Listening to Meeting on Zoom Videoconference:
 - Please use the “raise hand” feature at the bottom of screen
 - Please make sure to enable audio controls after given access
 - Provide questions in order of hand raise list
- Individuals Listening to Meeting on Telephone:
 - Please press *9 to raise your hand
 - Please press *6 after being prompted to unmute microphone

23

Community Feedback



24



The logo for LPA, consisting of the letters "LPA" in a white, serif font on a red rectangular background.

Next Steps

25

Community Meeting #2 Save the Date



The logo for LPA, consisting of the letters "LPA" in a white, serif font on a red rectangular background.

March 24, 2021 5:30pm via Zoom

Check Web Portal for Project Updates:

www.cityofranhocordova.org/CurrentProjects

If you have additional questions about the project please reach out to the City's project manager:

Kristine Courdy
(916) 851-8842
kcourdy@cityofranhocordova.org

26