



RANCHO CORDOVA LITTLE LEAGUE

City of Rancho Cordova
Community Meeting #2

03.24.21

1

Introductions

Meeting Presenters:



Albert Stricker
City of Rancho Cordova
Public Works Director



John Courtney
LPA, Inc.
Senior Project Manager



Kristine Courdy
City of Rancho Cordova
Project Manager



Project Stakeholders:



2

2

Meeting Outline & Goals



LPA

- Project overview
- Summary of community feedback from meeting #1
- Responses and project design updates
- Project schedule update
- Community feedback
- Next steps

3

3

Project Overview Existing Conditions



LPA



4

4

Project Overview



- ① Existing Parking to Remain
- ② New Restroom/Storage/Concession Bldg. & Flagpole Plaza
- ③ New Accent Paving (Texture/Color)
- ④ Existing Batting Cages Relocated
- ⑤ Relocate (3) storage containers to Southeast corner of school site
- ⑥ New Gate/Entry Sign
- ⑦ New Broom Finish Concrete Walk
- ⑧ Existing Classroom Buildings to Remain
- ⑨ Tubular Steel Fence at Property Line
- ⑩ Sports Netting
- ⑪ Intersection Improvements
- ⑫ City Street Rehabilitation Project (Separate City Project, Schedule Pending)

- ⬡ A RENOVATE "MAJOR" FIELD
200' OUTFIELD
 - ⬡ B RENOVATE "FARM" FIELD
125' OUTFIELD
 - ⬡ C RENOVATE "TEE BALL" FIELD
90' OUTFIELD
 - ⬡ D RENOVATE "MINOR" FIELD
200' OUTFIELD
 - ⬡ E RENOVATE "FARM" FIELD
150' OUTFIELD W/ PRACTICE TBALL OVERLAY
- *Conceptual design only, subject to change

5

5



Meeting #1 Comments

6

6

Community Meeting #1 Comments:



LPA

- Parking concerns on game days
- Property values
- Wider walkways (group circulation, ice chests, seating etc.)
- Additional written comments from stakeholders after meeting
 - Size of concession room
 - Public art
 - Facility name (keep it concise & consistent)
 - Chain link vinyl coating preference on fences
 - Shade structures
 - Field electrical distribution included (outlets in dugouts, etc.)
 - Pedestrian, traffic circulation & safety
 - Public space/plaza gathering space

7

7



LPA

Responses and Project Design Updates

8

8

Limit of Renovation Work & Summary of Little League Operation



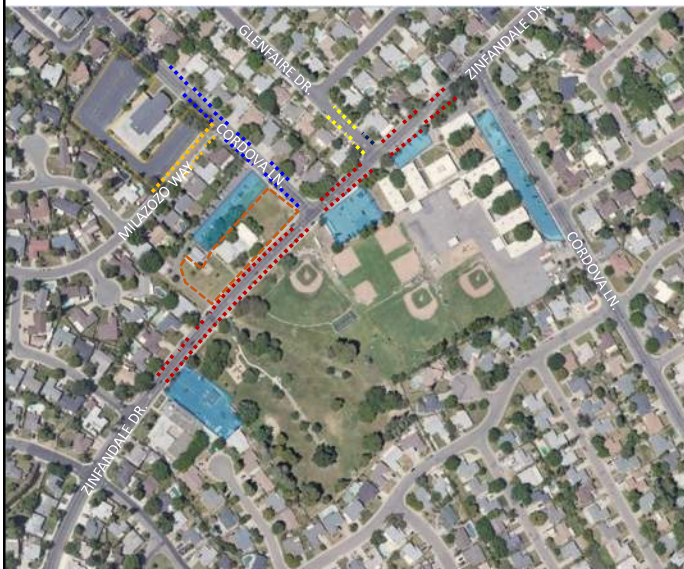
Existing Little League Operations:

- Replace existing fields (no new fields)
- Seasonal operation
- Games & Practice
- No nighttime use
- No mandatory Sunday activities

9

9

Parking Availability Discussion



Parking Utilization Legend

- Adjacent Parking Lots
- Active Parking Discussion: TBD

STREET PARKING:

- Zinfandel Dr.
- Cordova Ln.
- Milazozo Way
- Glenfaire Dr.

10

10

Updated Site Plan



- ① Existing Parking to Remain
- ② New Restroom/Storage/Concession Bldg. & Flagpole Plaza
- ③ New Accent Paving (Texture/Color)
- ④ Existing Batting Cages Location, may need relocating subject to grading
- ⑤ Relocate (3) storage containers to Southeast corner of school site
- ⑥ New Gate/Entry Sign
- ⑦ New Concrete Walk
- ⑧ Existing Classroom Buildings to Remain
- ⑨ Tubular Steel Fence at Property Line
- ⑩ Sports Netting
- ⑪ Intersection Improvements
- ⑫ City Street Rehabilitation Project (Separate City Project, Schedule Pending)

- Ⓐ RENOVATE "MAJOR" FIELD
200' OUTFIELD
 - Ⓑ RENOVATE "FARM" FIELD
125' OUTFIELD
 - Ⓒ RENOVATE "TEE BALL" FIELD
90' OUTFIELD
 - Ⓓ RENOVATE "MINOR" FIELD
200' OUTFIELD
 - Ⓔ RENOVATE "FARM" FIELD
150' OUTFIELD W/ PRACTICE TBALL OVERLAY
- *Conceptual design only, subject to change

11

11

Project Phasing Discussion



Limited funding currently available

Phased construction likely

Work with stakeholders to develop strategy for phasing based on site constraints, utility relocations, agency approvals (such as Division of State Architect, etc.), grading, property ownership and costs

- Ⓐ RENOVATE "MAJOR" FIELD
200' OUTFIELD
- Ⓑ RENOVATE "FARM" FIELD
125' OUTFIELD
- Ⓒ RENOVATE "TEE BALL" FIELD
90' OUTFIELD
- Ⓓ RENOVATE "MINOR" FIELD
200' OUTFIELD
- Ⓔ RENOVATE "FARM" FIELD
150' OUTFIELD W/ PRACTICE TBALL OVERLAY

12

12

Arrival Plaza



Examples

Intersection
Pedestrian
Enhancement



Opportunities
for Public Art



13

13

Intersection Pedestrian Enhancement at Zinfandel Drive & Cordova Lane



Example Materials (Similar to Benita Drive at Sonata Drive)

14

14

Ornamental Perimeter Fencing



Example Material: Black Powdercoated Tubular Steel Fencing

15

15

Internal Plaza Spaces



16

16

Plaza / Pedestrian Space Character



Example Photos

17

17

Modular Restroom, Concessions & Storage Building



Division of State Architect PreChecked
Modular Building, similar to the Softball Complex

Sample Materials Palette

18

18

Spectator Seating Bleachers



Examples: 5-Row



3-Row

19

19

Bleacher Shade Structures



Example Photos

20

20

Dugout Shade & Furnishings



Example Photos

21

21

Outfield Fencing & Foul Poles



Example Photos

22

22

Backstops



LPA



Major/Minor Fields - 30' Non-Hooded



Farm & T-ball - 20' hooded

23

23

Summary of Design Changes:



LPA

- Exploring parking opportunities with neighbor partners
- Public plaza spaces with wider walkways & gathering opportunities
- Concession building similar to softball
- Public art opportunities
- Black vinyl coated chain link
- Shade provided throughout (structures, trees, canopies etc.)
- Field electrical distribution included (outlets in dugouts, etc.)
- Pedestrian, traffic circulation & safety enhancements

24

24

Preliminary Schedule Overview



- 2021 - Spring
Conceptual Design Community Meetings
- 2021 - Summer/Fall
Engineering Design Plans
- 2022 - Spring
Bidding & Award
- 2022 - Summer
Start Construction of Phase One (subject to funding)

25

25

25

Community Feedback



How to Participate:

- Individuals Listening to Meeting on Zoom Videoconference:
 - Please use the "raise hand" feature at the bottom of screen
 - Please make sure to enable audio controls after given access
 - Provide questions in order of hand raise list
- Individuals Listening to Meeting on Telephone:
 - Please press *9 to ask a question
 - Please press *6 after being prompted to unmute microphone

26

26

26

Community Feedback



27

27



Next Steps

28

28

Community Project Portal



Check Web Portal for Project Updates:

www.cityofranhocordova.org/CurrentProjects

If you have additional questions about the project, please reach out to the City's project manager:

Kristine Courdy
(916) 851-8842
kcourdy@cityofranhocordova.org