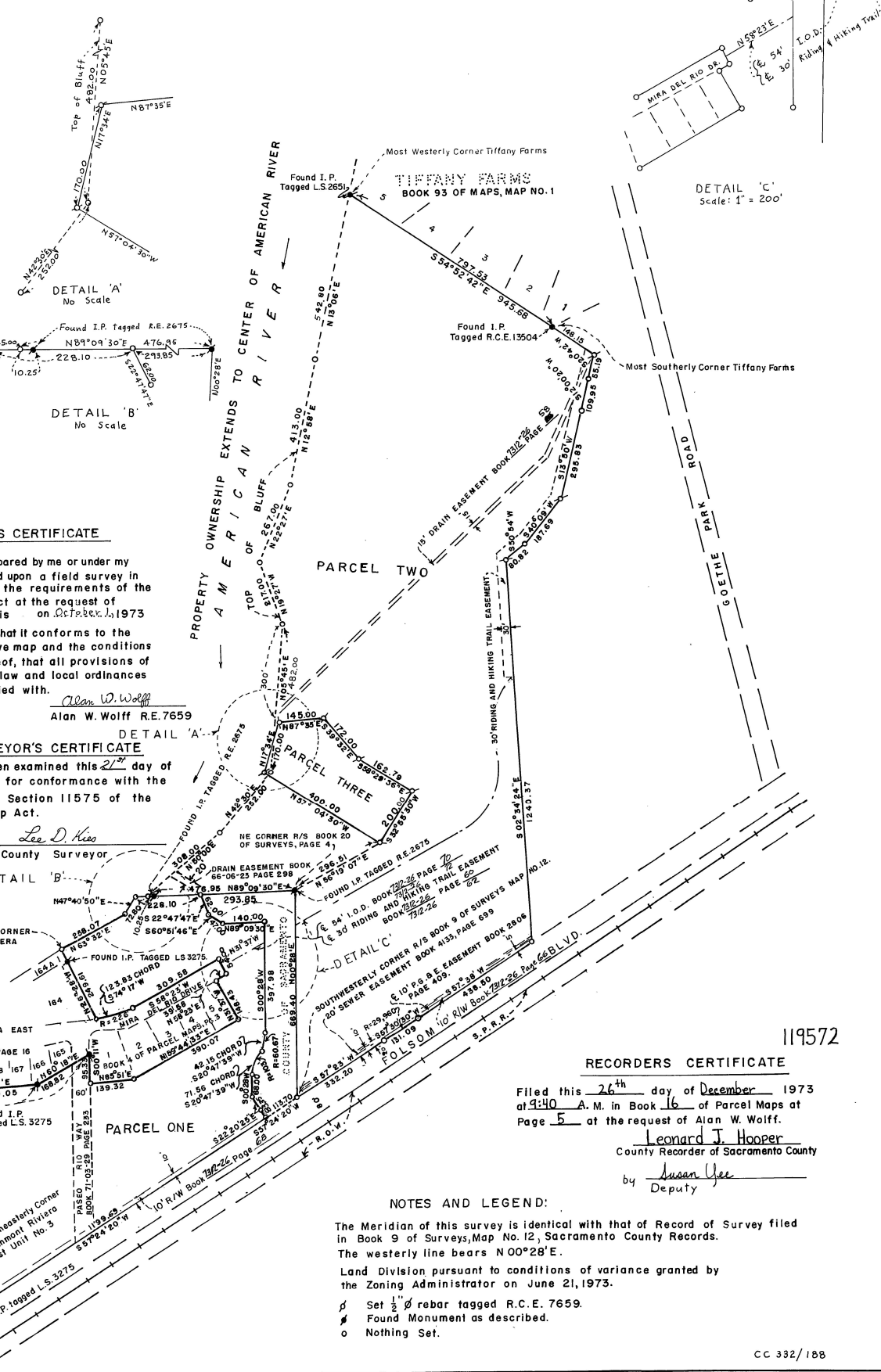
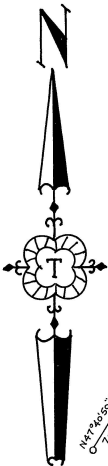


**PARCEL MAP**  
 PORTION OF ROUTIER 82-46/100A AND OF BOYD 157 - 85/100A - RANCHO RIO DE LOS AMERICANOS  
 COUNTY OF SACRAMENTO, CALIFORNIA - DECEMBER 1973 - SCALE: 1" = 200'  
 ALAN W. WOLFF CIVIL ENGINEER



DETAIL 'A'  
No Scale

DETAIL 'B'  
No Scale

DETAIL 'C'  
Scale: 1" = 200'

**SURVEYORS CERTIFICATE**

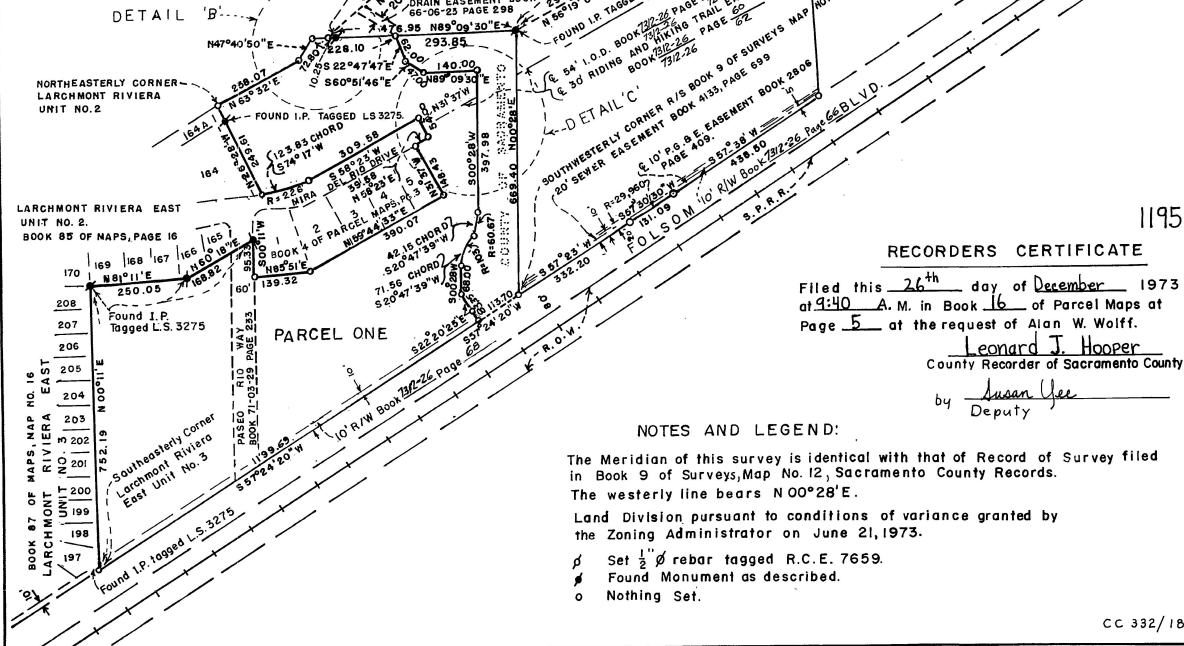
This map was prepared by me or under my direction and based upon a field survey in conformance with the requirements of the Subdivision Map Act at the request of Dr. John P. Kassis on December 1, 1973. I hereby certify that it conforms to the approved tentative map and the conditions of approval thereof, that all provisions of applicable state law and local ordinances have been complied with.

Alan W. Wolff  
 Alan W. Wolff R.E. 7659

**COUNTY SURVEYOR'S CERTIFICATE**

This map has been examined this 27<sup>th</sup> day of December 1973 for conformance with the requirements of Section 11575 of the Subdivision Map Act.

Lee D. New  
 County Surveyor



119572

**RECORDERS CERTIFICATE**

Filed this 26<sup>th</sup> day of December 1973 at 9:40 A.M. in Book 16 of Parcel Maps at Page 5 at the request of Alan W. Wolff.  
 Leonard J. Hooper  
 County Recorder of Sacramento County  
 by Susan Yee  
 Deputy

**NOTES AND LEGEND:**

- The Meridian of this survey is identical with that of Record of Survey filed in Book 9 of Surveys, Map No. 12, Sacramento County Records.
- The westerly line bears N 00° 28' E.
- Land Division pursuant to conditions of variance granted by the Zoning Administrator on June 21, 1973.
- ⊕ Set 1/2" ⌀ rebar tagged R.C.E. 7659.
- ⊙ Found Monument as described.
- Nothing Set.