

# Little League Renovation Project

February 16, 2022



CityOfRanchoCordova.org

1

1

## Meeting Goals

- Provide Project Update and Status
- Obtain approval from the CRPD Board of Directors for the Conceptual Design of the renovation of the Ahlstrom Park Ball Field

2

2

# Little League Renovation Project

- 2018 City Council approved Rancho Cordova Little League field renovation as a Community Enhancement Fund Legacy Project
- City Council approved a contract to LPA for the Project Design in December 2020
- Project has undergone Conceptual and Schematic Design
- A total of \$7.5M has been approved by the City Council for this Project

Project Stakeholders:



3

3

# Existing Conditions


**Ahlstrom Park**

- Rancho Cordova Little League Established 1956
- Moved to Ahlstrom in 1960's
- CRPD and FCUSD property
- Worn infrastructure

4

4

## Little League Renovation Concept Plan



- ① Rotate and renovate existing CRPD "Major" field (200' outfield)
- ② Relocate existing Batting Cages
- ③ Zinfandel Drive and Cordova Lane Intersection Improvements
- ④ Existing Parking to Remain
- ⑤ New Restroom/Storage/Concession Bldg
- ⑥ Renovate "Farm" Field (125' outfield)
- ⑦ Renovate Tee Ball Fields (90' outfield)
- ⑧ Renovate "Minor" Field (200' outfield)
- ⑨ Renovate "Farm" Field (145' outfield)
- ⑩ Relocate (3) storage containers to Southeast corner of school site

5

5

## Little League Renovation – Ahlstrom Park Field

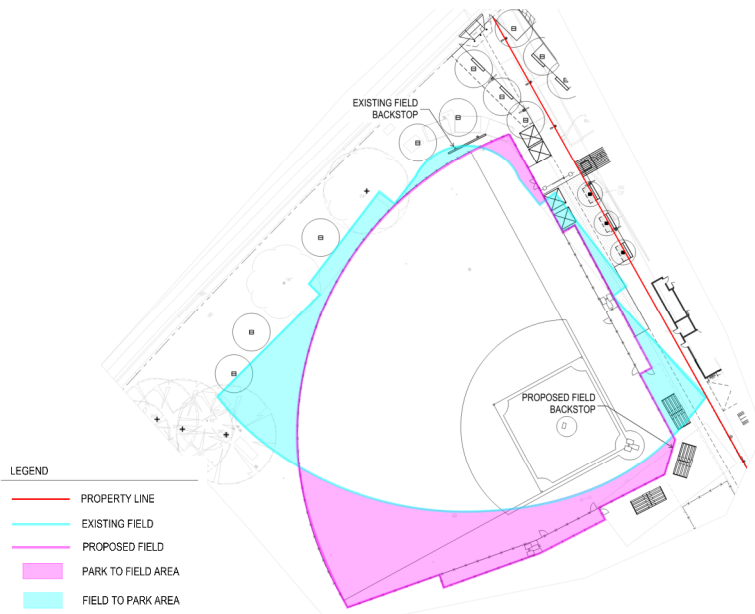


- Proposed Project scope includes a state-of-the-art Little League Facility
- Proposed field orientation creates a cohesive Project
- Public access will be provided to the field through Right Field Gate and Left Field Dugout (Note 1)
- Trees line the outfield
- Creates a central hub
- Provides connection for viewing of all age groups
- Opportunity for younger kids to look up to older kids.

6

6

# Little League Renovation - Ahlstrom Park Field



### Square Footage Summary

Existing Field = 39,130 sf  
 Proposed Field = 41,860 sf

### Overview of Field Differences (SF)

Park to Field = 8,360 sf  
 Field to Park = 5,680 sf  
 Net Impact = 2,680 sf  
 6% of Field SF

- Usable park space is not significantly changed with field rotation

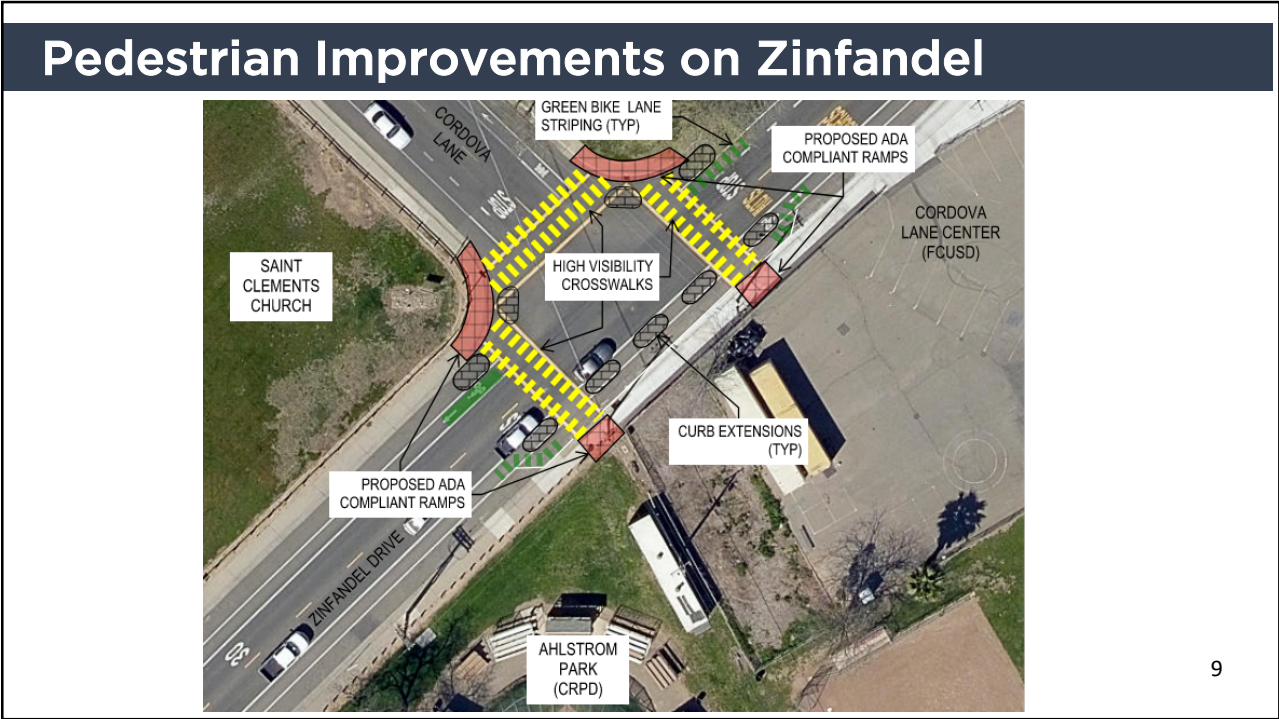
7

# Project Elements Examples



8

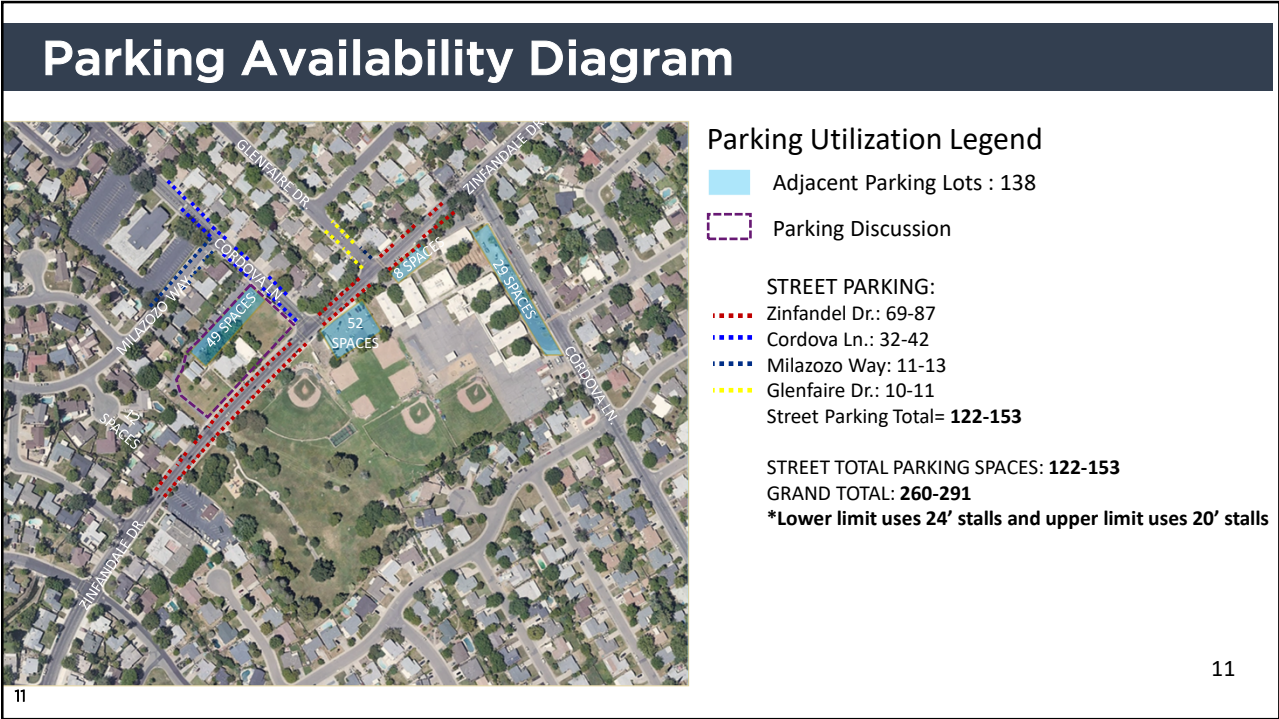
8



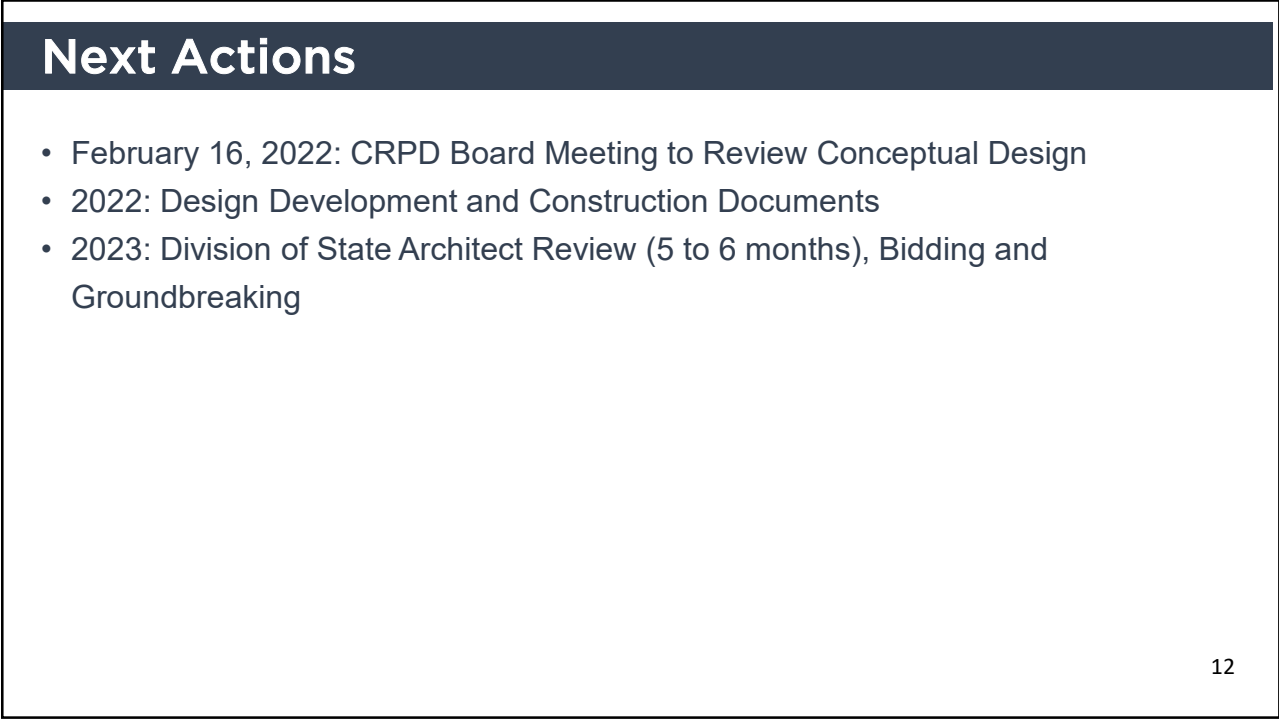
9



10



11



12

# THANK YOU

Check Web Portal for Project Updates:  
[www.cityofranhocordova.org/CurrentProjects](http://www.cityofranhocordova.org/CurrentProjects)

If you have additional questions about the project, please reach out to the  
City's Project Manager:

Kristine Courdy  
(916) 851-8842  
kcourdy@cityofranhocordova.org



CityOfRanchoCordova.org

13