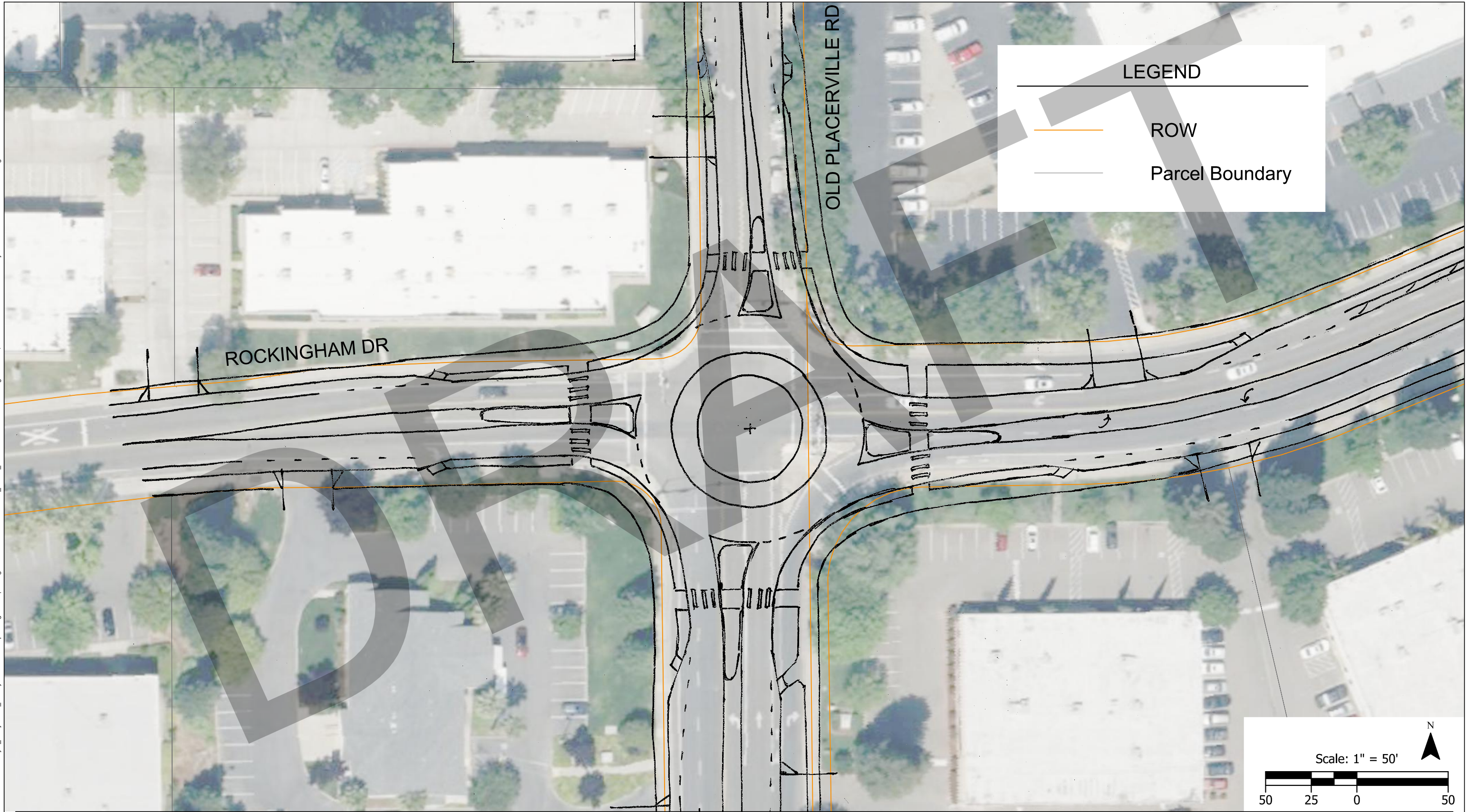




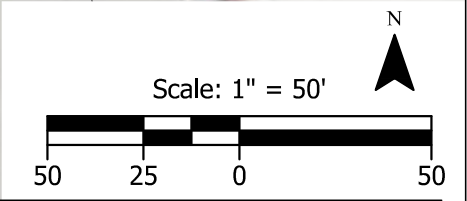
Appendix D: Exhibits





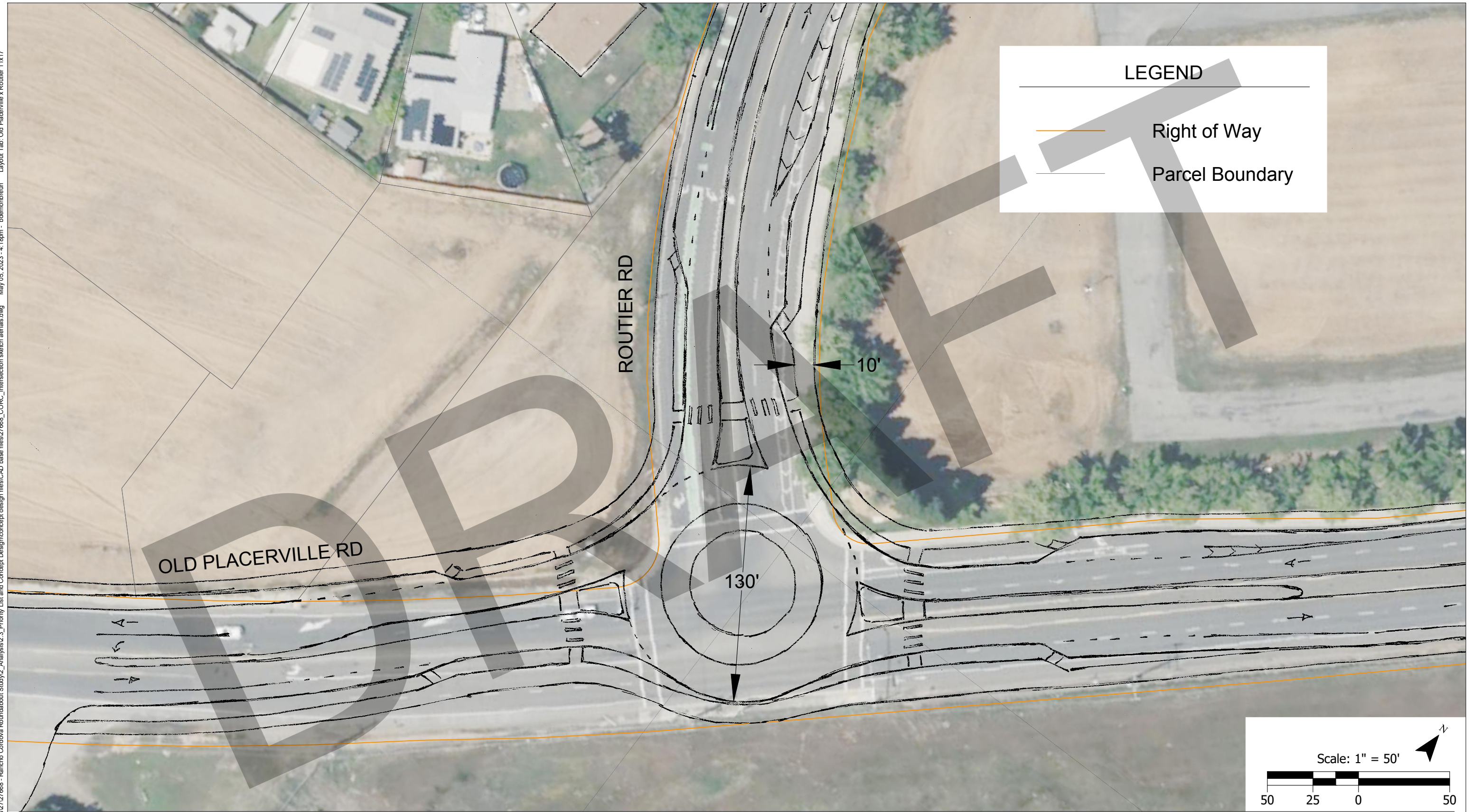
LEGEND

-  ROW
-  Parcel Boundary

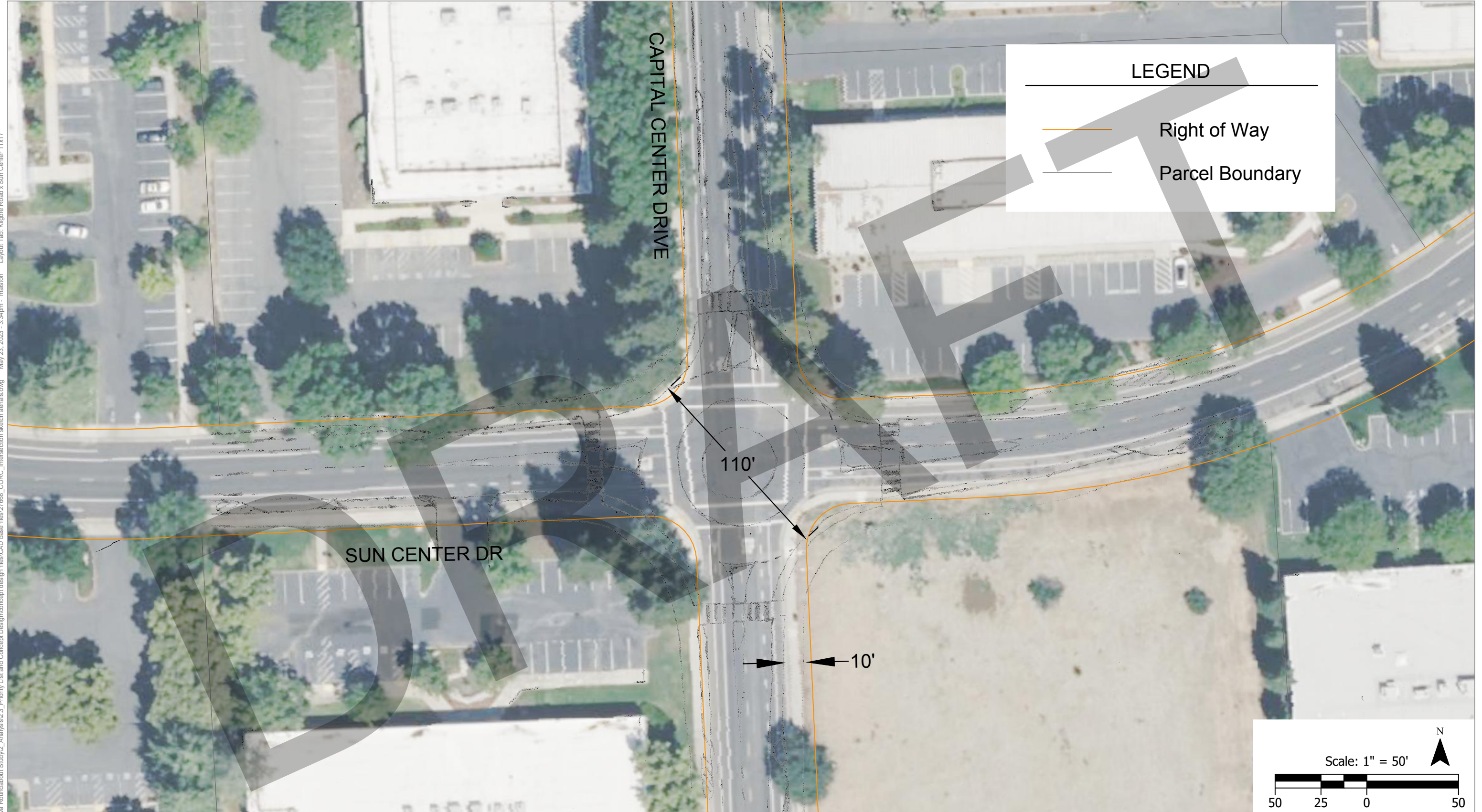


Old Placerville Rd & Rockingham Dr
Rancho Cordova, CA

\\kittelson.com\is\H_Projects\2727668 - Rancho Cordova Roundabout Study\2_Analysis\2_3_Priority List and Concept Design\concept design files\CAD_base files\27668_CORC_Intersection sketch aerials.dwg May 05, 2023 - 4:18pm - bdembreun Layout Tab: Old Placerville x Routier 11x17



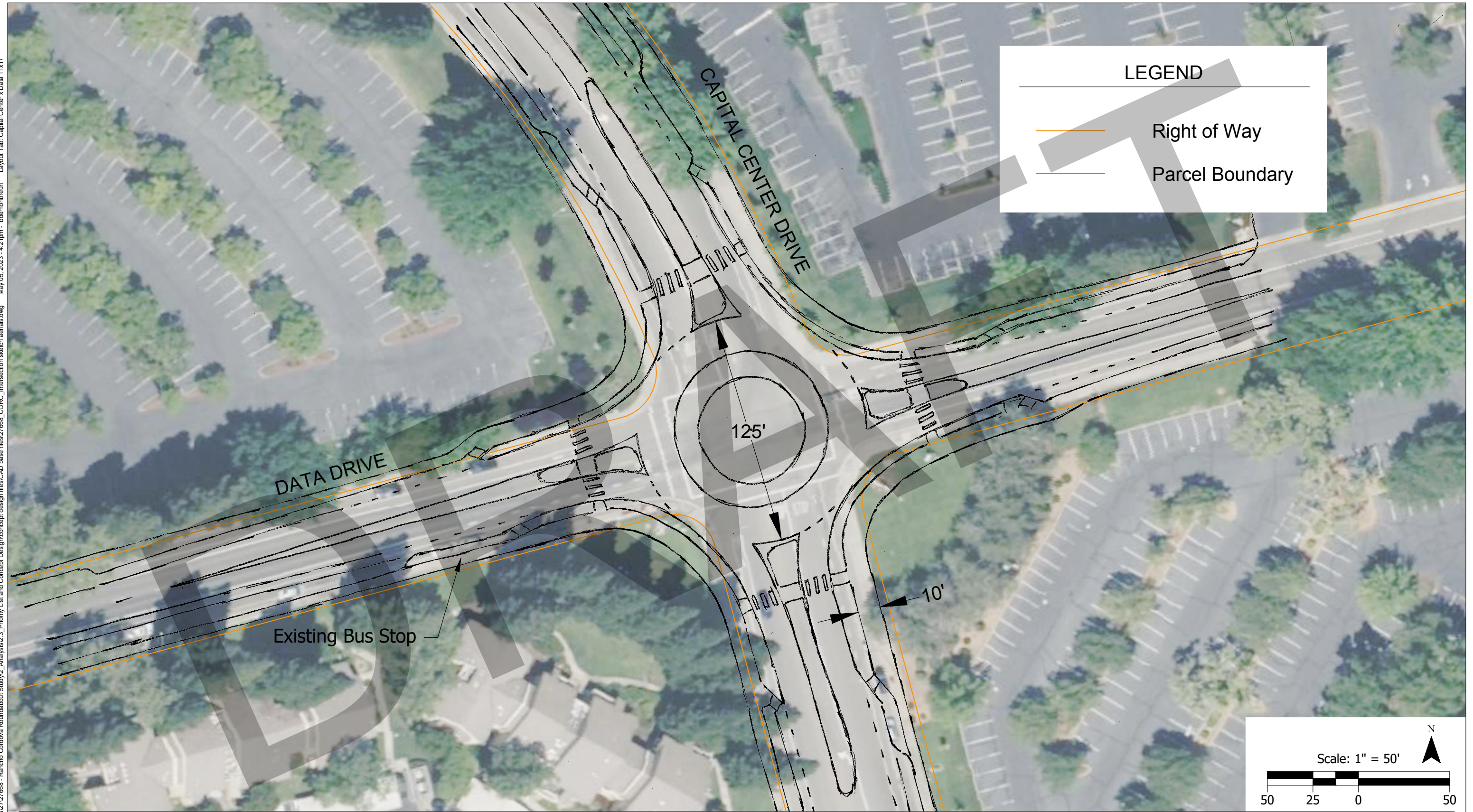
Old Placerville Rd & Routier Rd
Rancho Cordova, CA



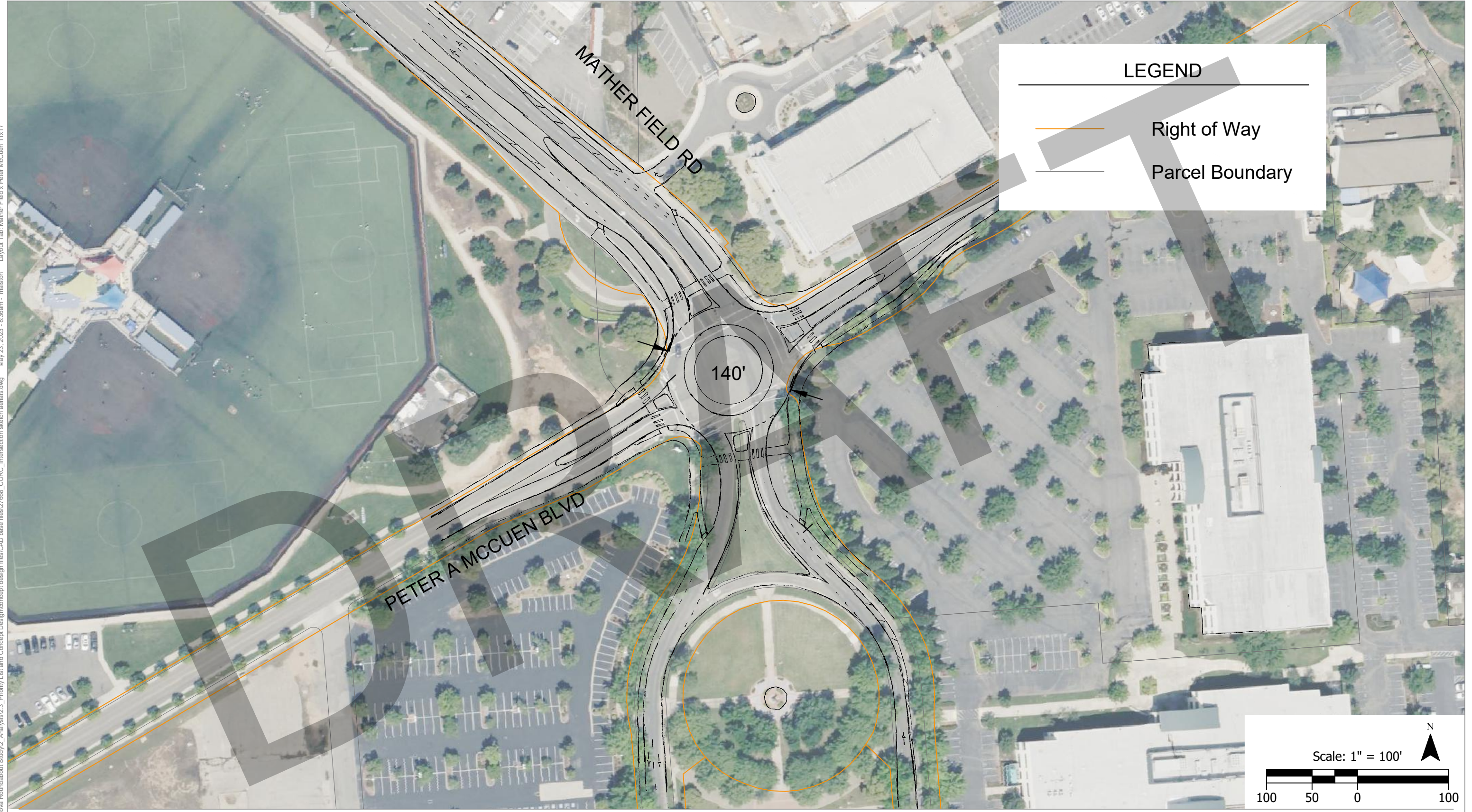
H:\27\27688 - Rancho Cordova Roundabout Study\2_Analysis\2.3_Priority List and Concept Design\concept design files\CAD base files\27688_CORC_intersection sketch aerials.dwg May 23, 2023 - 3:34pm - malston Layout Tab: Kilgore Road & Sun Center 11x17

Kilgore Rd & Sun Center Dr
Rancho Cordova, CA

\\kittelson.com\is\H_Projects\2727668 - Rancho Cordova Roundabout Study\2_Analysis\2_3_Priority_List and Concept Design\concept design files\CAD_base files\27668_CORC_Intersection sketch aerials.dwg May 05, 2023 - 4:21pm - bdemobrun Layout Tab: Capital Center x>Data 11x17

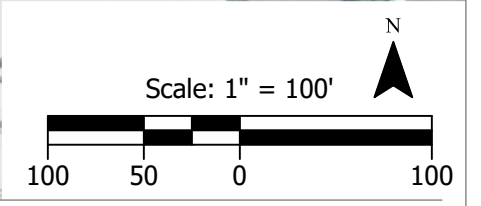


Capital Center Dr & Data Dr
Rancho Cordova, CA



LEGEND

- Right of Way
- Parcel Boundary



Mather Field Rd & Peter A McCuen Blvd
Rancho Cordova, CA

H:\2717688 - Rancho Cordova Roundabout Study\2_Analysis\3_Priority List and Concept Design\concept design files\CAD base files\2717688_CORC_intersection_sketch_aerials.dwg May 23, 2023 - 8:36am - malston Layout Tab: Mather Field x Peter McCuen 11x17